

**Features**

- 4/3-spool valve with integrated piloted check valve and adjustable throttle valve

<b>Valve blocks</b>	<b>Type BVB</b>
<b>up to 200 bar</b>	<b>up to 2 l/min</b>



**Design**

Integrated blocks  
from 2 to 6 valves

**Type of operation**

Direct current solenoid

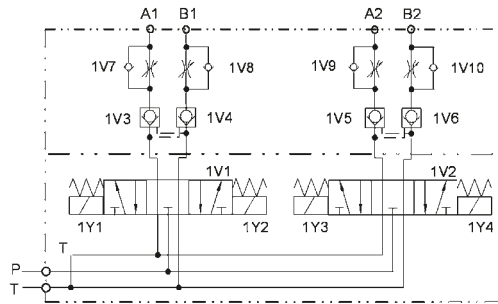
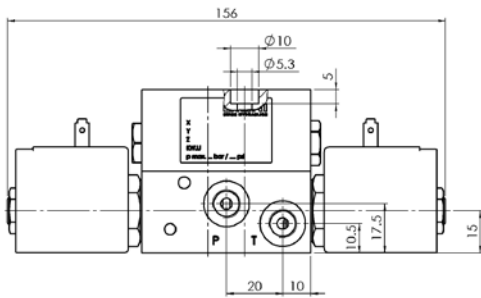
**Technical data**

Hydraulic fluid	mineral oil according to DIN 51524 (other fluids on request)	
Fluid temperature range	-30 to 80 °C	
Ambient temperature range	-20 to 50 °C	
Viscosity range	5 to 200 mm <sup>2</sup> /s (optimal: 15 to 35)	
Operating pressure max.	connection P, A, B	200 bar
	connection T	200 bar
Flow rate max.	2 l/min	
Filtration	according to NAS 1638 class 8 or ISO/DIN 4406 16/14	
Weight	see dimension drawings	
Material	valve block: aluminium	
Duty cycle	100%	
Power	solenoid 24 VDC	13 W 0.5 A
Protection degree	IP 54	
Connections	M 10 x 1	depth 8

<b>Valve blocks</b>	<b>Type BVB</b>
<b>up to 200 bar</b>	<b>up to 2 l/min</b>

**Side view valve block**

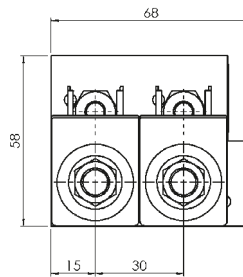
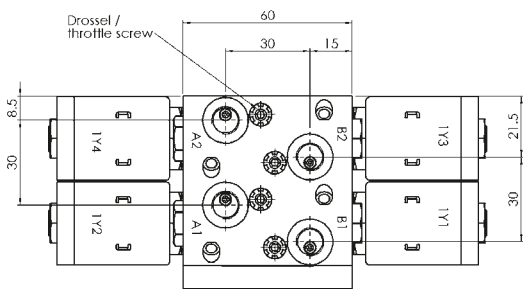
Weight: 1.8 kg



Hydraulic schema  
(2-fold block)

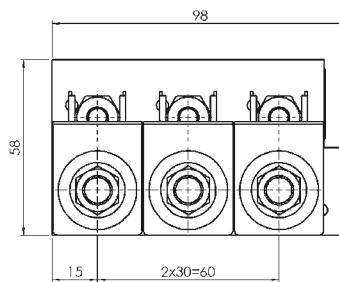
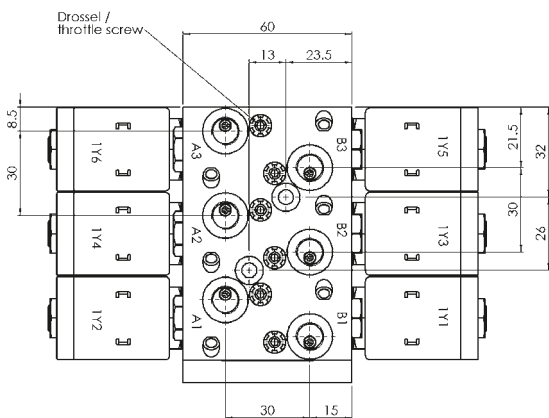
**2-fold valve block Article no. 67908**

Weight: 1.8 kg



**3-fold valve block Article no. 67303**

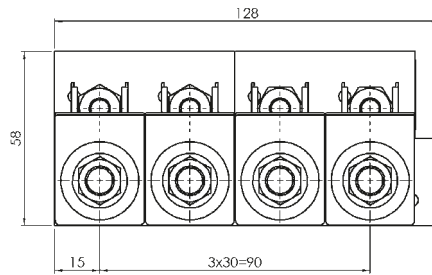
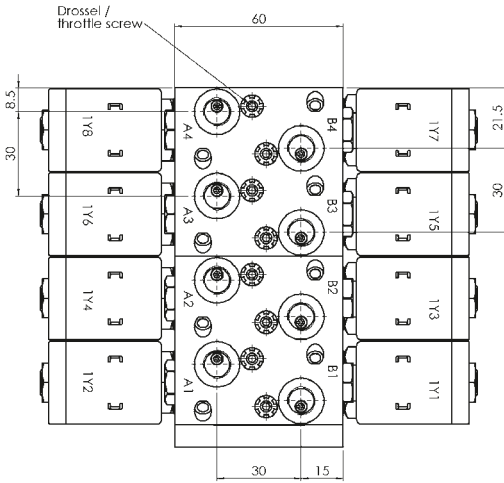
Weight: 2.7 kg



<b>Valve blocks</b> up to 200 bar	<b>Type BVB</b> up to 2 l/min
--------------------------------------	----------------------------------

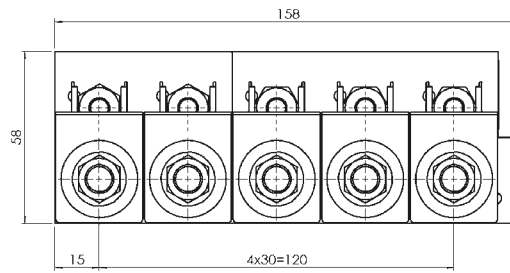
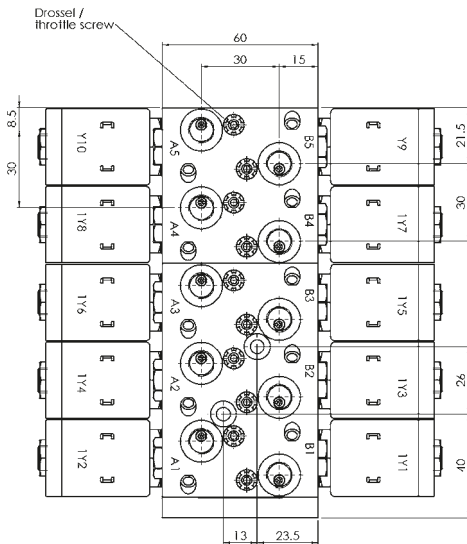
**4-fold valve block Article no. 67927**

Weight: 3.6 kg



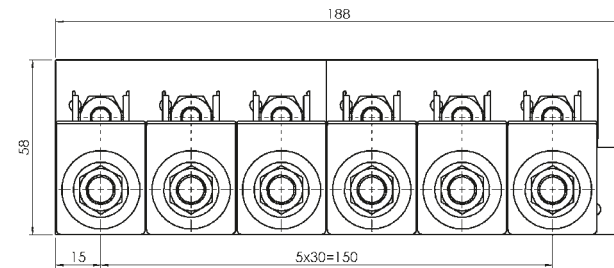
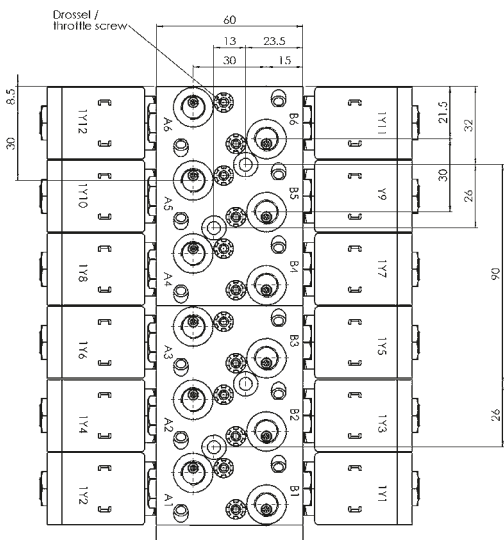
**5-fold valve block Article no. 67678**

Weight: 4.5 kg



**6-fold valve block Article no. 67276**

Weight: 5.4 kg



<b>Valve blocks</b>	<b>Type BVB</b>
<b>up to 200 bar</b>	<b>up to 2 l/min</b>

Ordering code: Example

**BVB** **200** - **2** - **4** / **3** - **24** - **P** - **00**

Valve block

Type

Number of valve block

Ports

Positions

Operated by 24 VDC

Seals P (NBR)

**Special design**

01 ... 99  
(00 for standard)

**Part index**

Please leave it blank  
(small letters a-z; different  
letters do not effect  
interchangeability)

**Design revision (AS)**

see table (capital letters A-Z;  
identical letters equal same  
connecting dimensions)

As we are constantly improving our products, we keep us the right to change the technical specifications without prior notice.

BVB-EN-0908

**Bieri Hydraulik AG**

Könizstrasse 274  
CH-3097 Liebefeld/Switzerland  
Tel. +41 31 970 09 09  
Fax +41 31 970 09 10  
sales@bierihydraulics.com

**BIERI**  
SWISS HYDRAULICS