

Pressure relief valves Type DV2 up to 1000 bar up to 12 l/min

Features

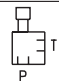
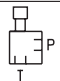
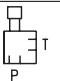
Poppet design.
Direct operated.
Max. pressure adjustable
by locking nut.



Application

Pressure relief valves with thread connection for in-line mounting.

Technical data

Part number	28010	28000	33352
Connection port			
Size	3	5	5
Back pressure compensation	-	-	X
Flow rate max.	3 l/min	12 l/min	12 l/min
Max. pressure	1000 bar	1000 bar	
Pressure range 1			200 bar
Pressure range 2			400 bar
Pressure range 3			600 bar
Hydraulic fluid	mineral oil according to DIN 51524 (other fluids on request)		
Fluid temperature range	-20 to 80 °C		
Ambient temperature range	-30 to 50 °C		
Material	steel: galvanized, black chromized		
Filtration	according to NAS 1638, class 6 or ISO/DIN 4406 15/12		
Weight	0,6 kg	0,6 kg	0,7 kg

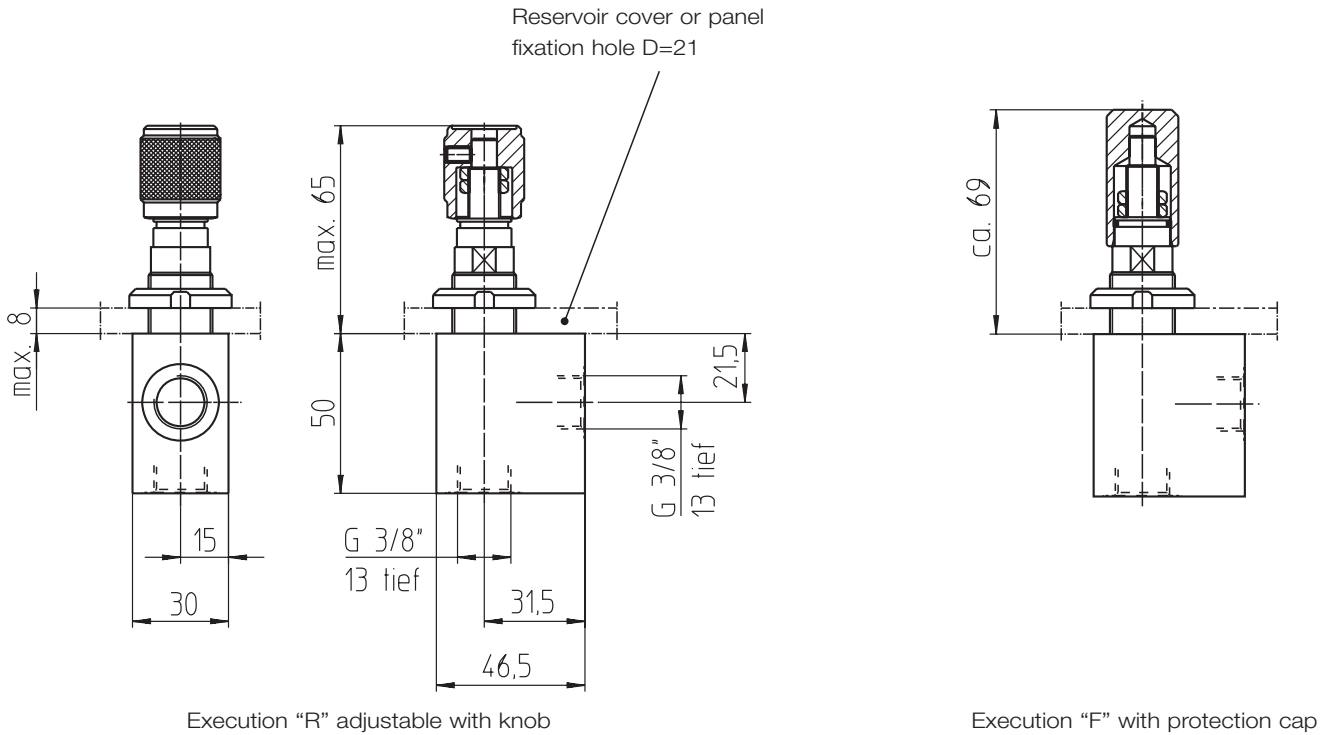
Pressure relief valves Type DV2 up to 1000 bar up to 12 l/min

Ordering code: Example

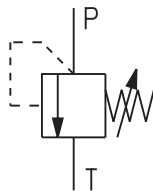
DV2 . 5 . 400 . R - 33352

Pressure relief valve DV2	
Size	3, 5
max. setting pressure [bar] (see technical data)	400
Function	R = with adjusting knob F = with protection cap
Part number	28000 28010 33352

Dimension drawings



Symbol



BIERI
Hydraulik

Bieri Hydraulik AG
Könizstrasse 274
CH-3097 Liebefeld/Switzerland
Telephone +41 31 970 09 09
Fax +41 31 970 09 10
sales@bierihydraulik.com

Design and data subject to modification

DV2-GB-06-12