

Features

- Direct operated valves
- Seated valves
- Porting NG 6 according to DIN 24340

Pilot operated check valves

Type ERV700

NG 6 up to 700 bar

up to 25 l/min



Application

To block leakage free one or two ports by using spool type valves with leakage.

Technical data

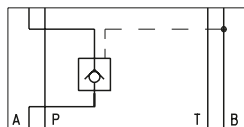
Hydraulic fluid	mineral oil according to DIN 51524 (other fluids on request)
Fluid temperature range	NBR: -30 to 80 °C FPM: -20 to 80 °C
Ambient temperature range	-30 to 50 °C
Viscosity range	5 to 400 mm ² /s (optimal: 10-68)
Porting	NG 6 according to DIN 24340 / ISO 4401 / CETOP RP 121 H
Operating pressure max. connection P, A, B	700 bar
Pressure admissible max. connection T	350 bar
Pressure ratio	$p_e/p = 1:5,4$
Flow rate max.	25 l/min
Filtration	according to NAS 1638, class 6 or ISO/DIN 4406 15/12
Weight	see dimension drawings
Material / surface treatment	housing: steel, galvanized, chromated cartridge: steel

Pilot operated check valves	Type ERV700
NG 6 up to 700 bar	up to 25 l/min

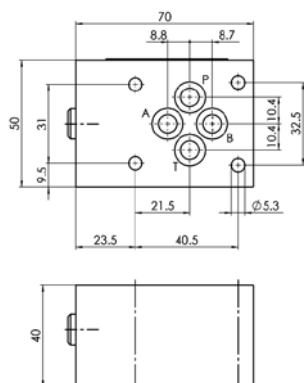
Pilot operated check valves (Type ERV700-6-A-X-A*00)

Weight 1,0 kg

Symbol



Dimension drawing

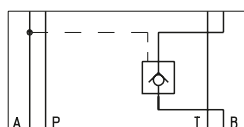


Article no.	P [NBR]	V [FPM]
	56890	57685

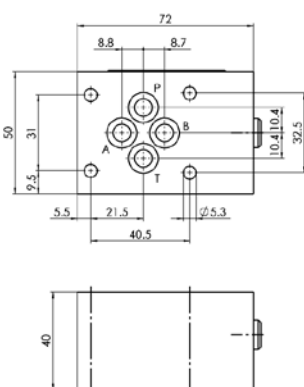
Pilot operated check valves (Type ERV700-6-B-X-A*00)

Weight 1,0 kg

Symbol



Dimension drawing

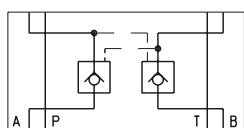


Article no.	P [NBR]	V [FPM]
	56891	57687

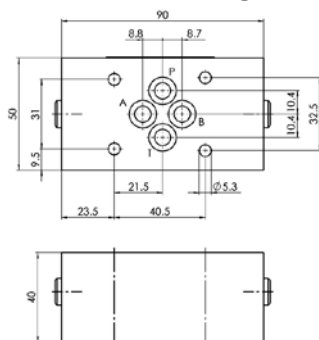
Pilot operated check valves (Type ERV700-6-AB-X-A*00)

Weight 1,3 kg

Symbol



Dimension drawing



Article no.	P [NBR]	V [FPM]
	55038	57684

Accessories

For each valve the following is included:

4 pieces O-rings 9,25 x 1,78 mm

90° ShA part no. 900195

Tie bolts / fixing screws

and subplates

see technical
data sheet AP / RP

Operating instructions see BA-BV700

As we are constantly improving our products, Bieri reserves the right to make changes to the technical specification without prior notice.

Bieri Hydraulik AG
Könizstrasse 274
CH-3097 Liebefeld/Switzerland
Tel. +41 31 970 09 09
Fax +41 31 970 09 10
sales@bierihydraulics.com

BIERI
SWISS HYDRAULICS