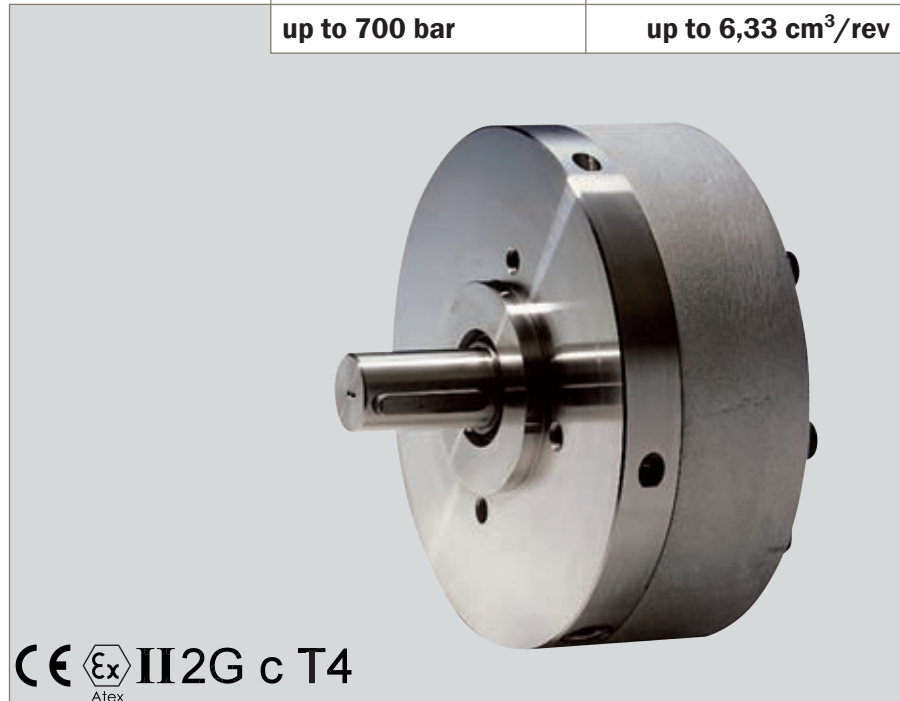


Features

- High volumetric efficiency
- Self-priming and venting
- Low pulsation
- Low noise level
- Specially suitable for demanding applications with continuous pressures up to 700 bar

| | |
|----------------------------|--------------------------------------|
| Radial piston pumps | Type SRK-Atex |
| up to 700 bar | up to 6,33 cm³/rev |



The valve controlled radial piston pump is of modular construction and can be supplied with 3, 5 or 7 pistons.

Multi outlet, other displacements, pressure or revolution ranges on request.

Technical data

| | |
|---|--|
| Hydraulic fluid | mineral oil according to DIN 51524 (other fluids on request) |
| Fluid temperature range | FPM: -20 to 80 °C |
| Ambient temperature range | -20 to 50 °C |
| Viscosity range | 5 to 220 mm ² /s (optimal: 15–35) |
| Suction pressure | 0,2 to 0,5 bar relative |
| Filtration | according to NAS 1638, class 8 or ISO/DIN 4406 16/14 |
| Material | pressure flange: steel diving shaft: steel cover: cast aluminium |
| Weight | see table |
| Installation position | any |
| Radial force / Axial force onto driving shaft | not allowed |
| Direction of rotation | any |
| Suction height | max. 500 mm |

| | |
|----------------------------|--------------------------------------|
| Radial piston pumps | Type SRK-Atex |
| up to 700 bar | up to 6,33 cm³/rev |

Calculation of driving motor power

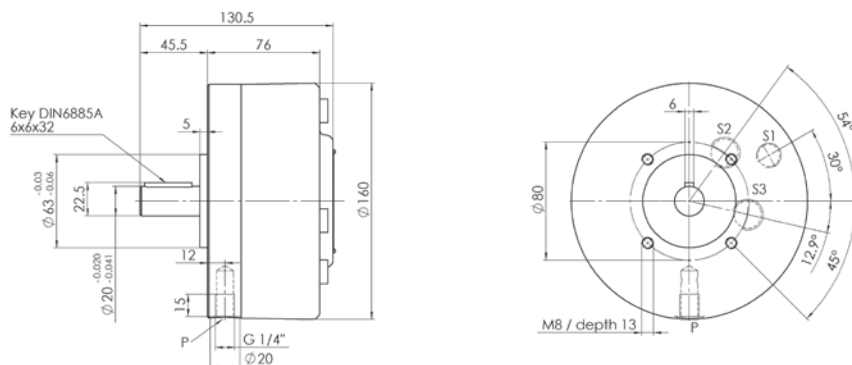
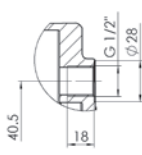
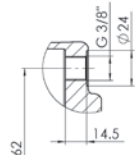
$$P = \frac{p \cdot V_g \cdot n \cdot k}{\eta_t \cdot 600 \cdot 10^3}$$

P = Driving power [kW]
 p = Operating pressure [bar]
 V_g = Displacement [cm³/rev]
 n = Speed [rpm]
 η_t = Overall efficiency approx. 0,9

k = Pulsation factor
 - with 3 pistons: k approx. 1,05
 - with 5 pistons: k approx. 1,0
 - with 7 pistons: k approx. 1,0

Dimension drawing 1 size 11 up to 700 bar

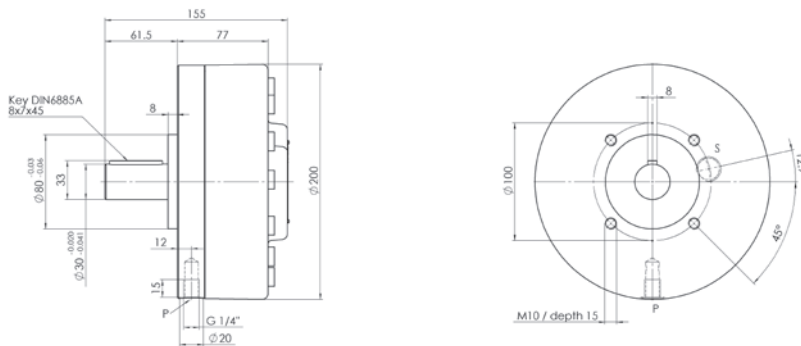
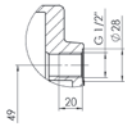
Design revision A

Suction connection
S1: 3 pistonsSuction connection
S2: 5 pistons
S3: 7 pistons**Radial piston pumps SRK-Atex size 11 (dimension drawing 1) up to 700 bar**

| Number of pistons | Piston Ø [mm] | Displacement [cm ³ /rev] | Operating pressure max. [bar] | Speed max. [rpm] | Weight [kg] | Size | Article no. [FPM] |
|-------------------|---------------|-------------------------------------|-------------------------------|------------------|-------------|------|-------------------|
| 3 | 5 | 0.47 | 700 | 1800 | 7 | 11 | 66134 |
| 3 | 6 | 0.68 | 700 | 1800 | 7 | 11 | 66135 |
| 3 | 8 | 1.21 | 700 | 1800 | 7 | 11 | 66136 |
| 3 | 9 | 1.52 | 700 | 1800 | 7 | 11 | 66137 |
| 3 | 10 | 1.88 | 700 | 1800 | 7 | 11 | 66138 |
| 3 | 12 | 2.71 | 550 | 1800 | 7 | 11 | 66139 |
| 5 | 5 | 0.78 | 700 | 1800 | 7.5 | 11 | 66140 |
| 5 | 6 | 1.13 | 700 | 1800 | 7.5 | 11 | 66141 |
| 5 | 8 | 2.02 | 700 | 1800 | 7.5 | 11 | 66142 |
| 5 | 9 | 2.54 | 700 | 1800 | 7.5 | 11 | 66143 |
| 5 | 10 | 3.14 | 700 | 1800 | 7.5 | 11 | 66144 |
| 5 | 12 | 4.52 | 550 | 1800 | 7.5 | 11 | 66145 |
| 7 | 5 | 1.09 | 700 | 1800 | 8 | 11 | 66146 |
| 7 | 6 | 1.58 | 700 | 1800 | 8 | 11 | 66147 |
| 7 | 8 | 2.83 | 700 | 1800 | 8 | 11 | 66148 |
| 7 | 9 | 3.56 | 700 | 1800 | 8 | 11 | 66149 |
| 7 | 10 | 4.40 | 550 | 1800 | 8 | 11 | 66150 |
| 7 | 12 | 6.33 | 400 | 1800 | 8 | 11 | 66151 |

Dimension drawing 2 size 12 up to 700 bar

Design revision A

Suction connection S
7 pistons**Radial piston pumps SRK-Atex size 12 (dimension drawing 2) up to 700 bar**

| Numer of pistons | Piston Ø [mm] | Displacement [cm ³ /rev] | Operating pressure max. [bar] | Speed max. [rpm] | Weight [kg] | Size | Article no. [FPM] |
|------------------|---------------|-------------------------------------|-------------------------------|------------------|-------------|------|-------------------|
| 7 | 5 | 1.09 | 700 | 1800 | 12.5 | 12 | 66152 |
| 7 | 6 | 1.58 | 700 | 1800 | 12.5 | 12 | 66153 |
| 7 | 8 | 2.38 | 700 | 1800 | 12.5 | 12 | 66154 |
| 7 | 9 | 3.56 | 700 | 1800 | 12.5 | 12 | 66155 |
| 7 | 10 | 4.40 | 700 | 1800 | 12.5 | 12 | 66156 |
| 7 | 12 | 6.33 | 700 | 1800 | 12.5 | 12 | 66157 |

