

**Bieri Hydraulik standard
components up to 1000 bar**

**High pressure hydraulic
systems for various applications**

Axial and radial piston pumps, valves, pressure switches, oil level switches and valve manifolds all from part of the standard Bieri product range.

The extensive Bieri product range includes hydraulic components for the most varied of requirements and applications. All, of course, featuring Bieri's well known, reliable «Made in Switzerland» quality.

BIERI pumps

high pressure pumps up to 1000 bar



Axial piston pumps AKP

Suction and pressure side valve controlled
High volumetric efficiency
Compact design

Operating pressure up to 700 bar
Displacement 0,016 – 2,2 cm³/rev.
Speed range 100 – 5000 rpm
ø 30 bis 61 mm, L 60 bis 150 mm



Radial piston pumps BRK

3-, 5- and 7-piston versions
Self priming, self venting
Valve controlled
High volumetric efficiency

Operating pressure up to 1000 bar
Displacement 0,47 – 6,33 cm³/rev.
Speed range 500 – 2000 rpm



Radial piston pumps HRK

Compact design
Direct installation of motor, no coupling, no bell-housing
Version with hollow eccentric shaft,
with or without pressure relief valve.

Operating pressure up to 700 bar
Displacement 0,12 – 0,34 cm³/rev.
Speed range 500 – 3600 rpm



Radial piston pumps SRK-ATEX

3-, 5- and 7-piston versions
Self-priming and venting
Suitable for use in explosive environments
Class II: gases, vapours, mists

Operating pressure up to 700 bar
Displacement 0,47 – 6,33 cm³/rev.
Max. speed 1800 rpm

BIERI pumps

multi-outlet and combination pumps up to 1000 bar

Combination pumps BKP

Combination of BRK pump and gear pump
Outstanding energy efficiency ratio
Fixed displacement
Any installation position possible

Operating pressure LP up to 250 bar
Operating pressure HP up to 1000 bar
Displacement LP 4,0 – 61,1 cm³/rev.
Displacement HP 0,47 – 6,33 cm³/rev.



Combination pumps SKP

2- and 3-piston high-pressure pumps. Suction and pressure side valve controlled. Integrated low-pressure shut-off valve and high-pressure relief valve. Design with hollow eccentric shaft.

Operating pressure LP up to 100 bar
Operating pressure HP up to 700 bar
Displacement LP 4,0 – 26,0 cm³/rev.
Displacement HP 0,5 – 2,7 cm³/rev.



Combination pump KKP

Compact and lightweight. Integrated low-pressure shut-off valve and pressure relief valve. Self-venting. Design with hollow eccentric shaft.

Operating pressure LP up to 160 bar
Operating pressure HP up to 700 bar
Displacement LP 1,11 – 5,43 cm³/rev.
Displacement HP 0,12 – 2,71 cm³/rev.



Multi-outlet pumps type MRK

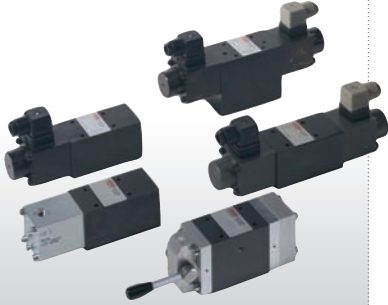
Various outlet pumps available on request.
Self-priming, self-venting. Valve controlled.
High volumetric efficiency.

Number of circuits 2–8
Operating pressure up to 1000 bar
Displacement/circuit 0,23 – 6,33 cm³/rev
Max. speed 2000 rpm



BIERI valves

**valves up to 700 bar and up to 25 l/min –
Porting NG6 DIN24340**



Seated valves BV700

2/2-, 3/2-, 3/3-, 4/2- and 4/3-way valves

Solenoid or manually operated
Pneumatic or hydraulic operated
Ball-seated type
Manual emergency operation
Electrical position control



Pressure valves

As screw-in cartridges or intermediate plate valves
Excellent pressure adjustment over the
entire operating range

- Pressure relief valves DV700
- Unloading valves DA700
- Pressure reducing valves DM700



Flow control valves

- Load holding and lowering valves SBV700
- Orifice plates
- Throttle valves / Throttle check valves SD700 / SDRV700



Non-return valves

- Shut-off valves AV700
- Check valves ERV700



Proportional valves

Proportional pressure relief valves PDV700
Large pressure range and high degree of pressure stability

BIERI valves

**valves up to 700 bar and up to 25 l/min –
Porting NG6 DIN24340**

Sub-plates, accessories

- Sub-plates and multi-station sub-plates AP700 / RP700
Compact circuit design with up to 6 control circuits
- Valve fittings



**valves up to 700 bar and up to 12 l/min –
Porting NG4**

Seated valves HV700

2/2-, 3/2- and 3/3-way valves

Solenoid operated

Ball-seated type

Manual emergency operation



Pressure relief valves

As screw-in cartridge or end plate valves

Excellent pressure adjustment over the entire operating range



Sub-plates and stacking plates

- Sub-plates and end plates APH700
Compact circuit design
- Accessories for horizontal stacking assembly



BIERI valves

valves for in-line mounting up to 1000 bar



Pressure relief valves DV2

Up to 12 l/min
Poppet design
Direct operated
Max. pressure adjustable by locking nut



Manual shut-off-valves SPV2

Up to 32 l/min
Poppet design
Leakage free
Low operating force
Both connections designed for max. pressure

valves for in-line mounting up to 700 bar



Manual gate valves HSV700

Up to 25 l/min
3/2, 3/3- and 4/3-way valves
For in-line mounting or plate arrangement NG6,
DIN 24340
Robust design
Weight optimised



Automatic dump valves ADV700

Up to 25 l/min
For single acting cylinders
Switching on and shut-off function
Small dimensions

BIERI accessories

pressure switches up to 1000 bar

Pressure switches with one change-over switch

Protection class IP 64
Switching hysteresis of scale end value 5–10%
Repeat accuracy of scale value 1%

With pressure adjusting scale
7 Pressure ranges (60–1000 bar)
Minimal dimensions
Can be turned through 360° at full pressure



Pressure switches with two change-over switches

Protection class IP 54
Switching hysteresis of scale end value 2–10%
Repeat accuracy of scale value 1%

7 Pressure ranges (60–1000 bar)
Suitable for panel mounting
Indication of actual pressure and pressure settings



oil level switches

Oil level switches

Minimal dimensions
Length up to 1200 mm
Removable without disassembling reservoir cover

Various types available with 1 or 2 level contacts and additional temperature switch
Temperature contact up to 90°C



As we are constantly improving our products, we keep us the right to change the technical specifications without prior notice.

Bieri Hydraulik AG develops individual products and solutions which precisely fulfil the requirements specified by the customer.

BIERI

SWISS HYDRAULICS

Bieri Hydraulik in medical engineering

Hydraulic components for operating tables, X-ray and CT-scan tables.



Bieri Hydraulik in industry

Micro-pumps for oil production, the chemical industry and for crimping tools. Complete hydraulic units.



A company of MK Holding SA



Bieri Hydraulik AG
Könizstrasse 274
CH-3097 Liebefeld
Switzerland

Tel. +41 31 970 09 09
Fax +41 31 970 09 10
www.bierihydraulics.com
info@bierihydraulics.com