

**HIGH PRESSURE
& MICRO
Hydraulic Solutions**

For any applications where space is limited and intelligent solutions are in demand, we are your competent partner for HIGH PRESSURE & MICRO hydraulics.

From components to systems, our solutions stand for:

Space – Optimization



Multi – Functionality



Energy – Efficiency



Sustainability – Reliability

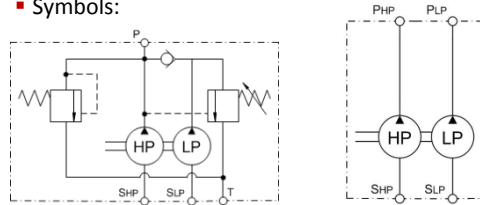


SKPI

New dual stage combination pump HP/LP with hollow shaft for IEC standard motors

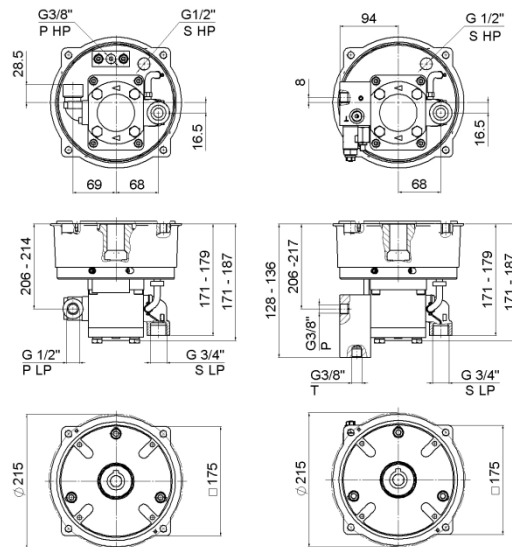


■ Symbols:



Component

■ Pump dimensions:



IEC motors B5 flanges

■ Matching:

Motor size	Motor power min. [kW]	Motor power max. [kW]	SKP [old Type]	SKPI [new Type]
BG 80	0.55	0.75	SKP03 (shaft Ø 19mm)	SKPI-80
BG 90	1.1	1.5	SKP03 (shaft Ø 24mm)	SKPI-90
BG 100	2.2	3	SKP04	SKPI-100
BG 112	4	5.5	SKP04	SKPI-112
BG 132	5.5	7.5	SKP05	-

Description

BIERI's new radial piston pump SKPI, combined with an external gear pump, is a very light and compact designed 2-stage pump unit with high and low pressure cycle.

The IEC flange, available in three motor sizes, enables an optimum space-saving mounting directly on E-motors, without bell housing and coupling, optionally inside of tank lid or outside.

The pump is now available either with or without a manifold with integrated **pressure relief valve DVM** and unloading valve DAM.

Therefore this pump is unbeatable regarding multifunctionality and optimization of installation space.

New features:

- Pump now also available without valve block (-> max. 700 bar)
→ valves individually installable outside of the tank
- Valve block now equipped with **pressure relief valve DVM** and **unloading valve DAM**
→ easier to adjust and fatigue resistant
- HP pump with 3 piston elements → smaller motor, lower noise
- Pump can now be installed outside of a tank

Technical data

- p_{max} 700 bar HP / 250 bar LP
- V_g/HP 0,45 → 2,71 cm³/rev
- V_g/LP 4,45 → 16,71 cm³/rev
- n 500 → 2000 rev/min
- Flange and shaft for IEC B5
BG80, 90, 100, 112; Ø 200 → Ø 250 mm

Features → Advantages

- Hollow shaft and optionally integrated pressure valves:
→ extremely compact and weight-saving
- Valve controlled and low piston clearance:
→ Very high volumetric efficiency over a broad speed range
- Bearing designed for maximum constant pressure (700 bar)
→ Long operating life
- Optimized design of inlet and outlet valves
→ Self-venting
→ Very high suction performance
- Modular pump system:
→ Enables supply of standard pumps as well as special customized models,
→ Assistance at motor selection

Segments & Applications

Examples:

- Hydraulic tools
- Rescue tools
- Construction & recycling
- Lifting and transport systems
- Ship building