

# Bieri Combination Pump for a safe usage in rail construction

## NEWS



# → Hydraulic Rail Stressing ←

## Demands

- Reliable pressure maintenance at **700 bar**
- High flow rates at low pressure at **60bar**
- compact and lightweight



**BIERI**  
HYDAC INTERNATIONAL

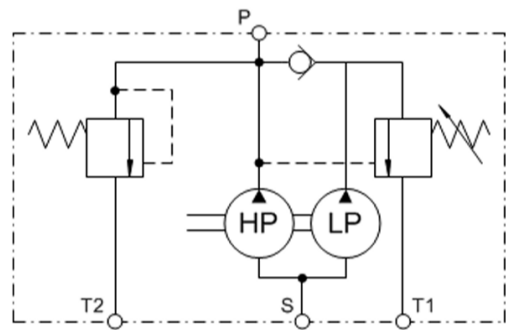
Bieri Hydraulik AG  
Könizstrasse 274  
CH-3097 Liebefeld

[info@bierihydraulics.com](mailto:info@bierihydraulics.com)  
[www.bierihydraulics.com](http://www.bierihydraulics.com)

# The Solution

# Bieri Combination Pump KKP

Low Pressure	up to 160 bar	0,57 to 5,43 cm <sup>3</sup> /U
High Pressure	up to 700 bar	0,17 to 2,71 cm <sup>3</sup> /U



## Advantages

- compact & lightweight - from Ø 100mm and 2,0 kg
- spacesaving assembly thanks to hollow shaft
- able to start under maximum pressure
- self-venting and self-priming
- Integrated low pressure unloading valve
- Integrated fail safe valve
- and many more... [www.bieri hydraulics.com](http://www.bieri hydraulics.com)