

**Bieri *micro* power unit  
for heavy load transportation**

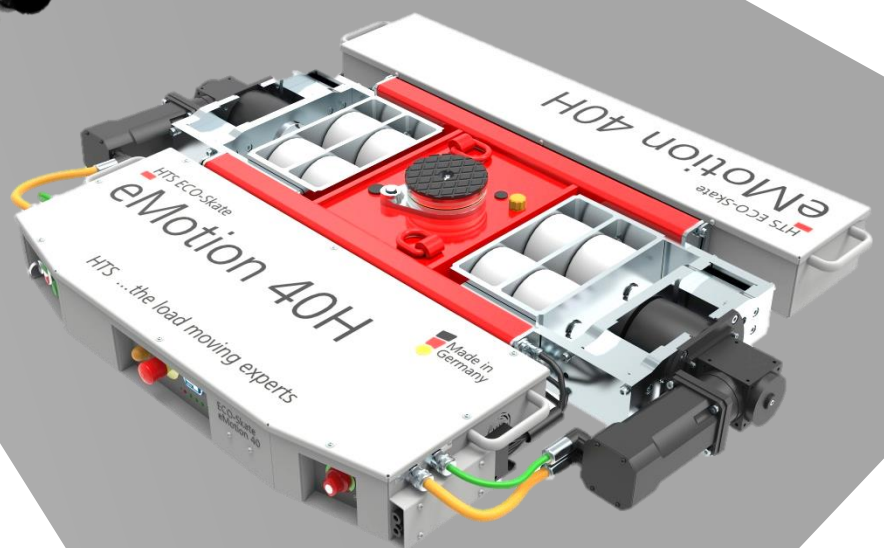
**in cooperation with Hydac AB Süd and  
HTS - Hydraulische Transportsysteme GmbH**



**HTS**



[www.hts.de](http://www.hts.de)



## Task

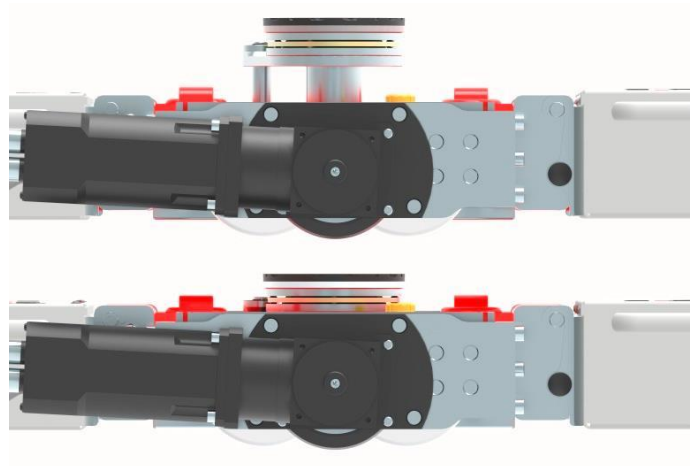
- **Load moving skates for heavy loads up to 40.000 kg**  
transport chassis available for 10, 24 and 40t
- **particularly small height of the total system < 200 mm**
- **extreme low installation height for hydraulics < 90 mm**

# HTS

[www.hts.de](http://www.hts.de)



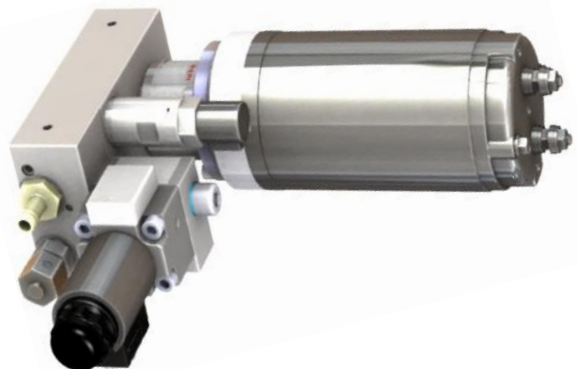
**HTS ECO-Skate eMotion 40H**



## Solution

**500 bar**  
**Bieri micro power unit**

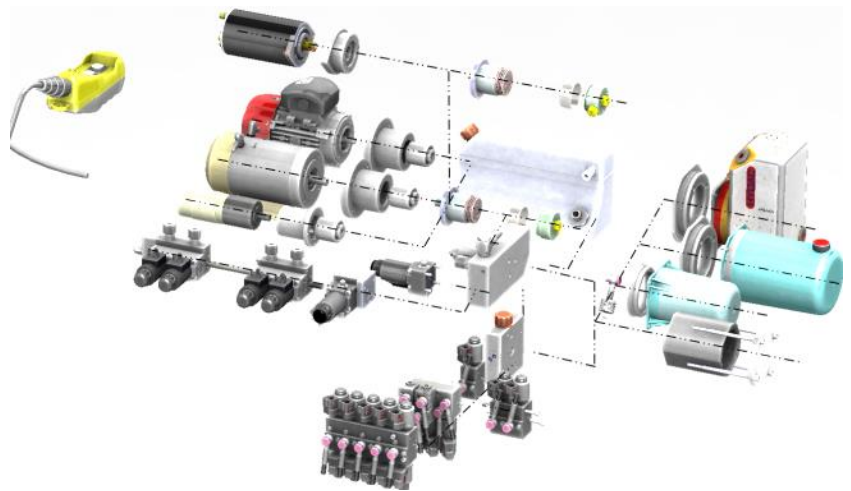
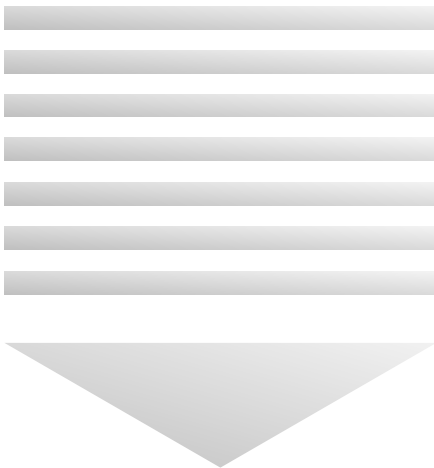
how it's done...



The **BIERI micro unit construction kit** enables very compact motor-pump and power unit solutions for limited installation spaces.

Due to the modular design, valves of the type WVH-4B can be flange-mounted as individual valves or in a valve bank, depending on the functional requirements. As an alternative, numerous valves from the HYDAC mini-valve kit are available for combination with the motor-pump assembly.

## BIERI micro unit construction kit



### Specification

### Application

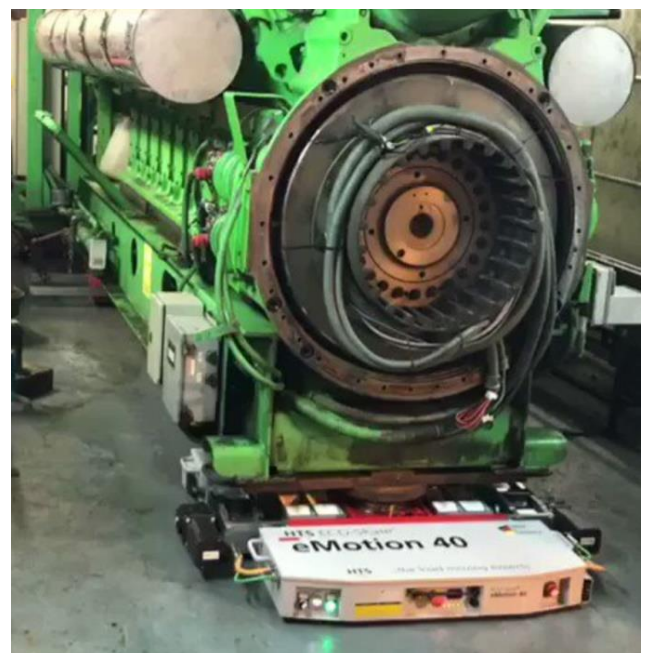
E-motor

Micro-  
pump

Pump flange

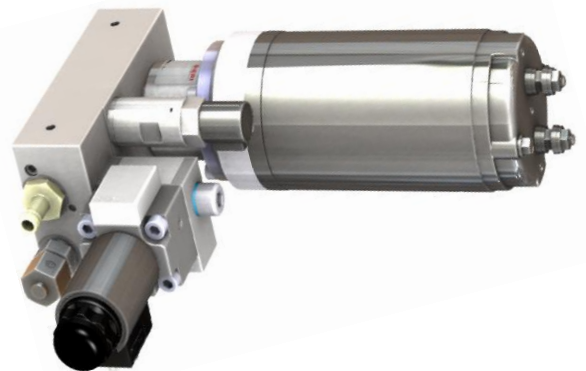
Valves

- max. 500 bar
- 0,1 ccm/rev
- 0,5 kW
- **Height < 90mm**



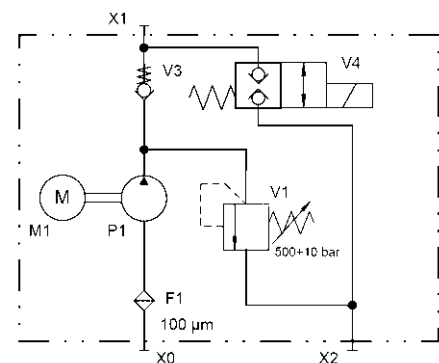
## Advantages Bieri micro-Power Unit

- very flat constructions possible (height <90 mm)
- External motor
  - ➔ less oil heating
- Easy adaptation for electric motors from 0.2 kW to 1.5 kW
  - ➔ variety of variants
- Multifunctional valve interface
  - ➔ Valve inline stacking
- optional hand cable remote control
- position-independent installation



## Technical data

- max. 500 bar
- 0,1 - 0,3 ccm/rev
- 0,2 - 1,5 kW
- Height power unit < 90mm
- 100 to 5000 rev/min
- 12, 24, 48 VDC
- Operating modes: S3, S6 <20% duty cycle



## Applications

- Integration in load moving skates and transportation robots  
e. g. as a lifting drive in the ECO Skate eMotion40
- Lifting tables
- Hydraulic tools
- Clamping technology & fixture construction
- Forming technology
- Construction & recycling
- Testsystems