

Unloading valves

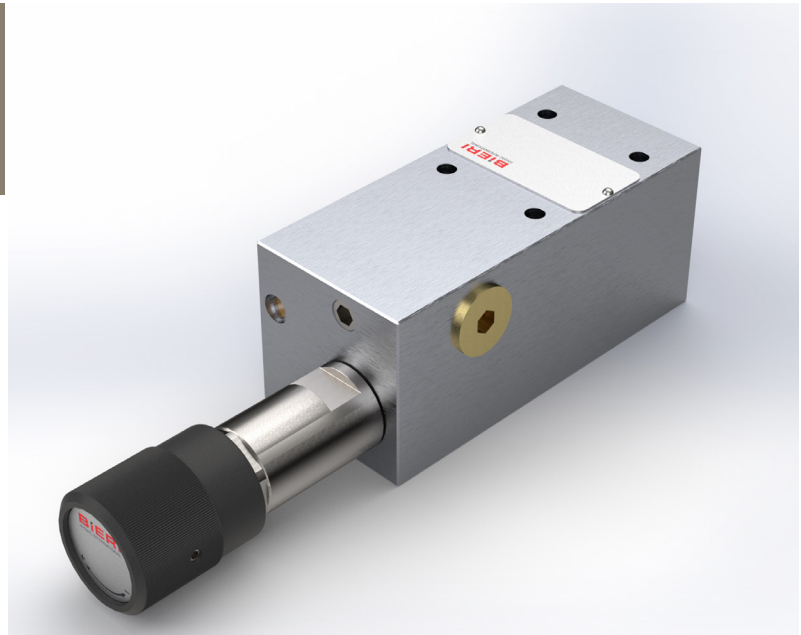
Type DA700

NG 6 ISO

up to 25 l/min, up to **700 bar**

Features

- Directly operated
- Poppet tight
- Good corrosion resistance
- High operational safety and reliable switching
- High duty cycles and long lifetime
- Fine pressure adjustment over the entire pressure range
- Switch-off pressure up to max. 350 bar can be limited by lock nuts



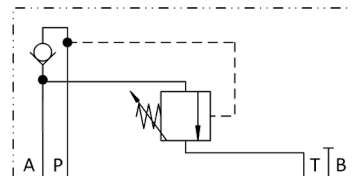
Applications

The unloading valve is used with a low pressure (LP) and a high pressure pump (HP) in a dual-pressure-system. They both supply the same working port. The valve unloads the low pressure pump flow at a set pressure to the tank.

Before the switchover both pumps supply the working port. After the switch over the low pressure pump flow is connected loss-free to the tank. The working port is supplied by the high pressure pump only.

Design

- A Connection for low-pressure pump
- P Connection for high-pressure pumps
- T Tank connection
- The unloading valve is designed as final valve of vertical valve stacks.



Technical data

| | | |
|---|---|------------------------------|
| Hydraulic fluid | mineral oil according to DIN 51524 (other fluids on request) | |
| Fluid temperature range | - 20 to 80 °C | |
| Ambient temperature range | - 30 to 50 °C | |
| Viscosity range | 5 to 400 mm ² /s | |
| Porting | NG 6 according to DIN 24340 / ISO 4401 / CETOP RP 121 H | |
| Max. operating pressure connection P | 700 bar | |
| Max. operating pressure connection A, T | 350 bar | |
| Max. flow rate | 25 l/min | |
| Pilot pressure adjustable | 25 bar up to 350 bar | |
| Filtration (recommendation) | according to NAS 1638, class 6 resp. ISO/DIN 4406 17/15/12 | |
| Weight | 2.1 kg | |
| Material | valve body: | steel, galvanized, chromated |
| | cartridge body: | corrosion-resistant steel |
| | adjusting knob: | plastic |

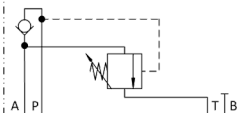
Type DA700

NG 6 ISO
up to 25 l/min, up to 700 bar

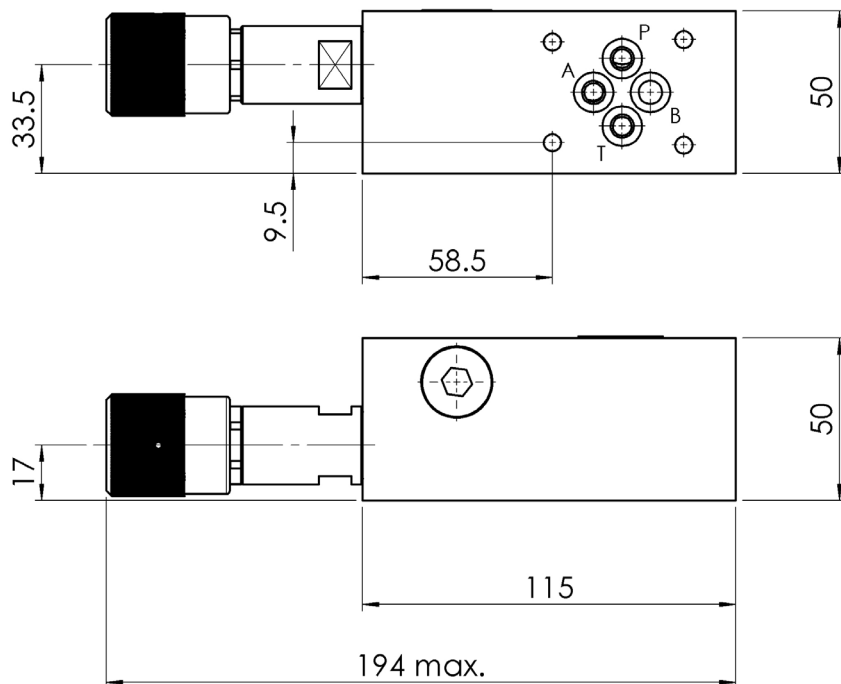
Type code

| | | | | | | | | | | | | | | |
|-------------------------------|---|-----|---|---|---|---|---|-----|---|---|---|---|--|---|
| Example | DA | 700 | - | 6 | - | A | - | 350 | - | V | - | A | | 00 |
| Unloading valves | | | | | | | | | | | | | | Design 00 ... 99 For internal purposes |
| Size | 700 bar | | | | | | | | | | | | | |
| Nominal Size | 6 | | | | | | | | | | | | | |
| Low pressure port | A (connection for low-pressure pump) | | | | | | | | | | | | | Index Please leave blank For internal purposes |
| Max. shut-off pressure | 350 bar | | | | | | | | | | | | | Design revision For internal purposes |
| Seal material | V FKM other seal materials on request | | | | | | | | | | | | | |

Product information

| Low pressure port | A |
|-------------------|---|
| Type code | DA700-6-A-350-V-*00 |
| Part No. | 3682115 |
| Symbol |  |

Dimensional drawings



Scope of delivery

For each valve the following is included:
 4 pieces O-rings 9,25 x 1,78 mm, FKM, 90°ShA
 1 Adjusting knob mounted
 1 Cap in addition

Accessories

Tie bolts/ fixing screws and subplates
 see technical data sheet AP/ RP