

Pressure reducing valves

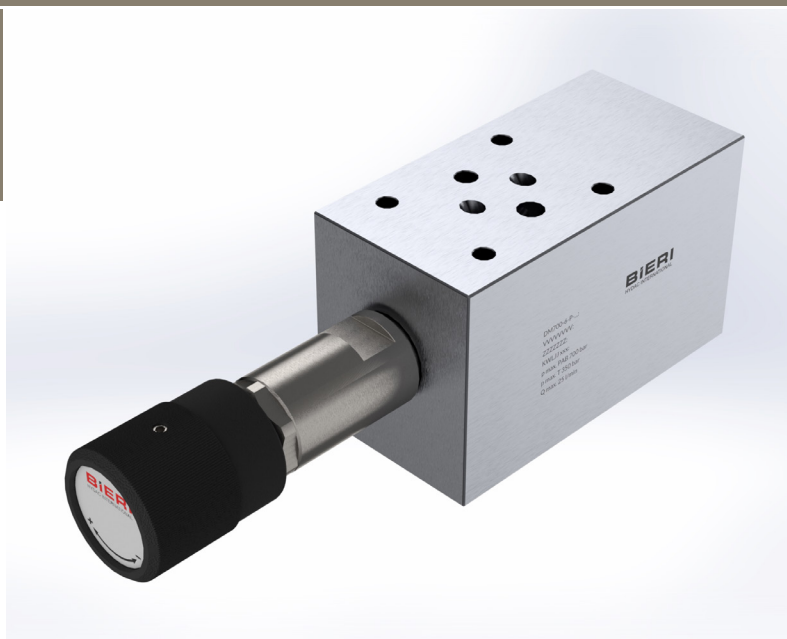
Type DM700

NG 6 ISO

up to 25 l/min, up to **700 bar**

Features

- Directly operated
- Poppet tight
- Max. pressure limitation in reduced pressure side
- This valve is atmospheric balanced. The pressure regulation occurs compared to the ambient

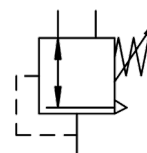


Applications

Used in hydraulic systems, where beside the nominal pressure a reduced pressure for a second user is needed.

Design

- Poppet valve
- Modular type
- With integrated check valve



Technical data

Hydraulic fluid	mineral oil according to DIN 51524 (other fluids on request)
Fluid temperature range	- 20 to 80 °C
Ambient temperature range	- 30 to 50 °C
Viscosity range	5 to 400 mm ² /s
Porting	NG 6 according to DIN 24340 / ISO 4401 / CETOP RP 121 H
Max. operating pressure connection P, A, B	700 bar
Max. operating pressure connection T	350 bar
Pressure setting range connection A	70 to 600 bar
Hysteresis	up to 20 % of reduced pressure
Max. pressure limitation in reduced pressure side	15 % over reduced pressure
Max. flow rate	25 l/min
Filtration (recommendation)	according to NAS 1638 class 6 resp. ISO/DIN 4406 17/15/12
Weight	2.3 kg
Materials	valve body: stainless steel cartridge body: stainless steel adjusting knob: plastic

Type DM700

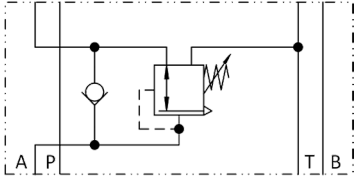
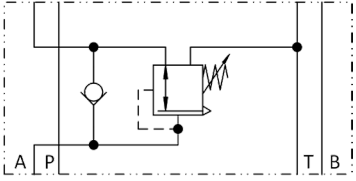
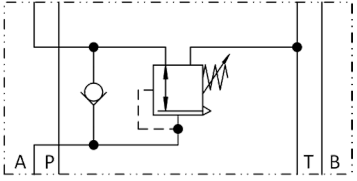
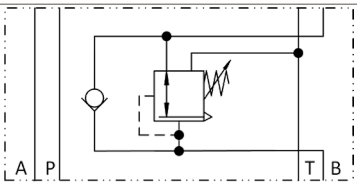
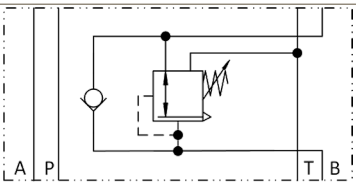
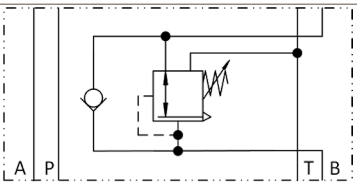
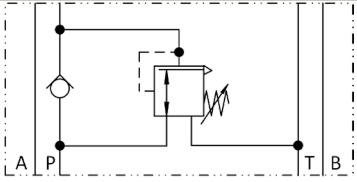
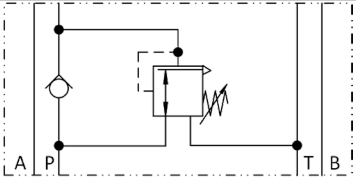
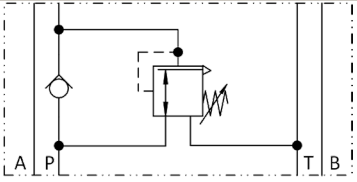
NG 6 ISO
up to 25 l/min, up to 700 bar

Type code

Example	DM	700	-	6	-	A	-	350	-	V	-	A		00
----------------	-----------	------------	---	----------	---	----------	---	------------	---	----------	---	----------	--	-----------

Pressure reducing valves															Design 00 ... 99 For internal purposes
Size	700 bar														
Nominal size	6														
Design	A (in connection A) B (in connection B) P (in connection P)														
Max. pressure setting connection A	130 (70 to 130 bar) 350 (120 to 350 bar) 600 (250 to 600 bar)														
Seal material	V FKM other seal materials on request														
															Index Please leave blank For internal purposes
															Design revision For internal purposes

Product information

Pressure setting	070 to 130 bar	120 to 350 bar	250 to 600 bar
Design	A		
Type code	DM700-6-A-130-V-A*00	DM700-6-A-350-V-A*00	DM700-6-A-600-V-A*00
Part No.	on request	3682407	on request
Symbol			
Design	B		
Type code	DM700-6-B-130-V-A*00	DM700-6-B-350-V-A*00	DM700-6-B-600-V-A*00
Part No.	on request	on request	on request
Symbol			
Design	P		
Type code	DM700-6-P-130-V-A*00	DM700-6-P-350-V-A*00	DM700-6-P-600-V-A*00
Part No.	on request	3741407	on request
Symbol			

Scope of delivery

For each valve the following is included:
 4 pieces O-rings 9,25 x 1,78 mm, 90° ShA
 1 Adjusting knob mounted
 1 Cap in addition

Accessories

Tie bolts/ fixing screws and subplates are optionally available,
 see technical data sheet AP700/RP700/EP700!

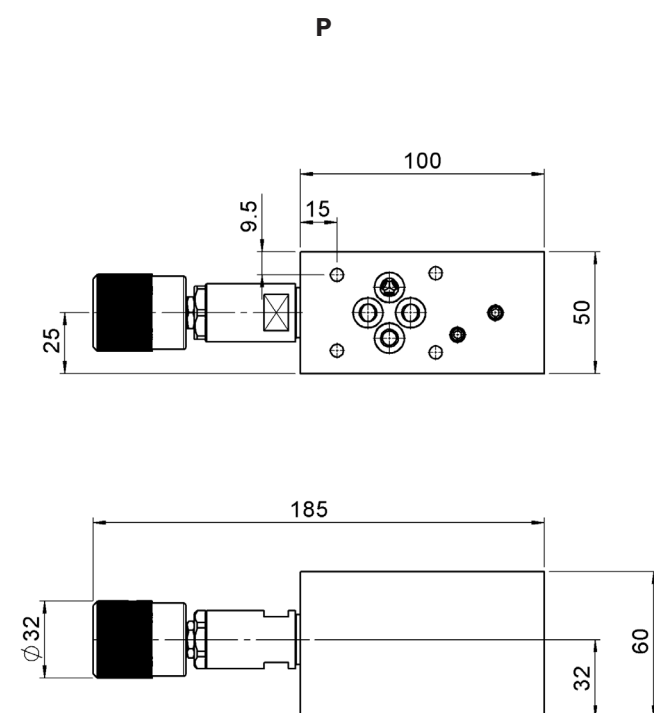
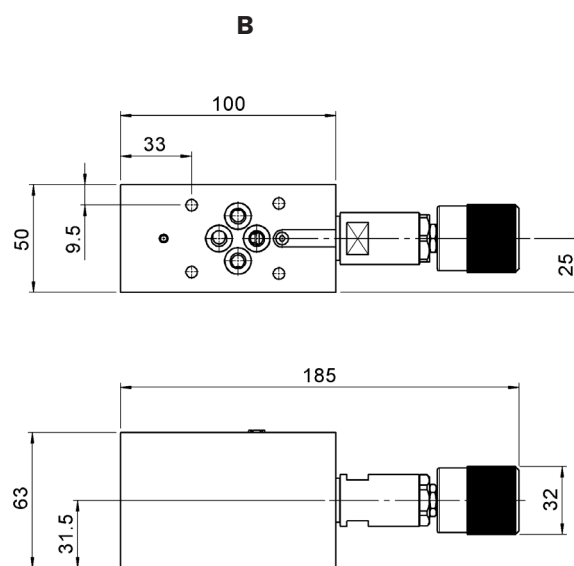
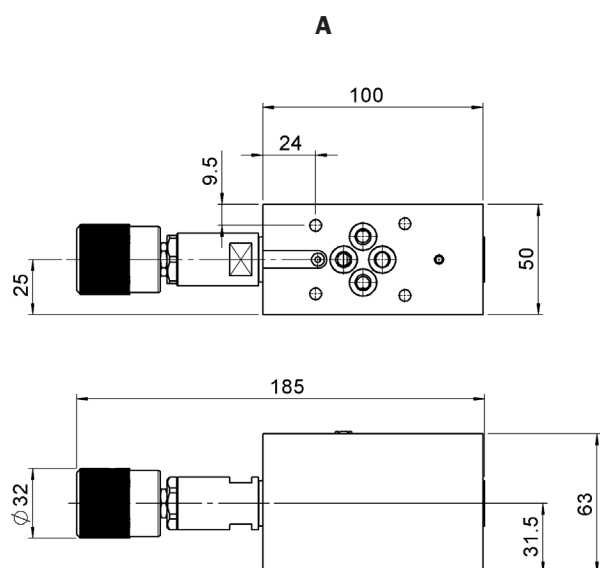
Spare parts

Item description	Part No.
4 x O-Ring 9,25 x 1,78, FKM, 90 Shore A	4455692
Protective plug	4007853
Rotary grip	4005442
Protective cover 76 x 45 x 10	4007851
Check valve RV700-6-D8-V-A*00	3685929

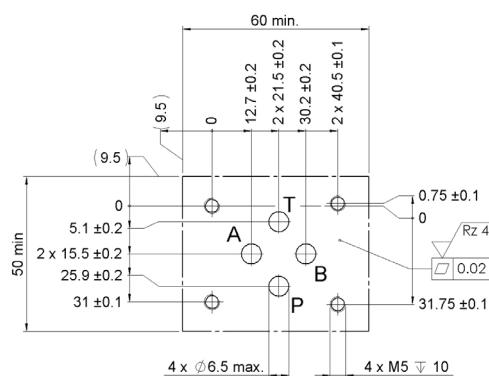
Type DM700

NG 6 ISO
up to 25 l/min, up to 700 bar

Dimensional drawings



Drilling pattern



Bieri Hydraulik AG

Könizstrasse 274
CH-3097 Liebefeld
Tel. +41 31 970 09 09 | Fax +41 31 970 09 10
info@bieri hydraulics.com | www.bieri hydraulics.com
4/4

The information in this brochure relates to the operating conditions and applications described.

For applications and operating conditions not described, please contact the relevant technical department.

Subject to technical modifications.

DM700_10000548325_EN_14L25