

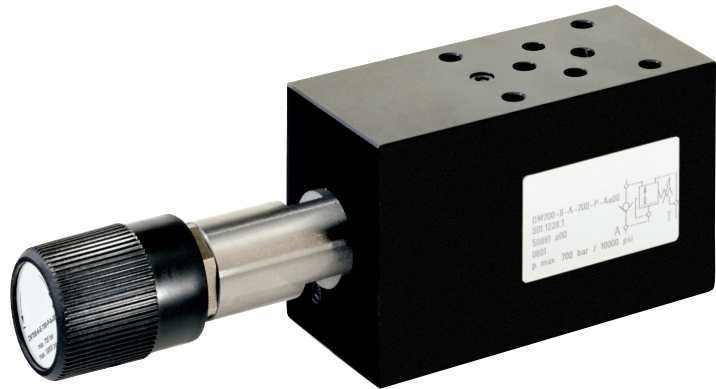
Pressure reducing valves

Type DM700

NG 6 ISO
up to 25 l/min, up to **700 bar**

Features

- Directly operated
- Poppet tight
- Max. pressure limitation in reduced pressure side
- This valve is atmospheric balanced. The pressure regulation occur compared to the ambient

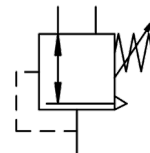


Applications

Used in hydraulic systems, where beside the nominal pressure a reduced pressure for a second user is needed.

Design

- Poppet valve
- Modular type
- With integrated check valve



Technical data

Hydraulic fluid	mineral oil according to DIN 51524 (other fluids on request)
Fluid temperature range	- 20 to 80 °C
Ambient temperature range	- 30 to 50 °C
Viscosity range	5 to 400 mm ² /s
Porting	NG 6 according to DIN 24340 / ISO 4401 / CETOP RP 121 H
Max. operating pressure connection P, A, B	700 bar
Max. operating pressure connection T	350 bar
Pressure setting connection A	70 bar - 600 bar
Hysteresis	up to 20 % of reduced pressure
Max. pressure limitation in reduced pressure side	15% over reduced pressure
Max. flow rate	25 l/min
Filtration (recommendation)	according to NAS 1638 class 6 resp. ISO/DIN 4406 17/15/12
Weight	2.3 kg
Material	valve body: steel, galvanized, black chromated cartridge body: stainless steel adjusting knob: plastic

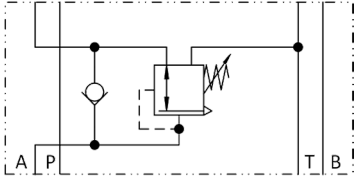
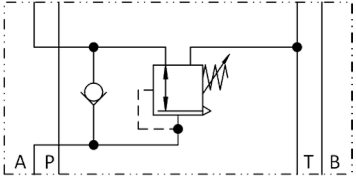
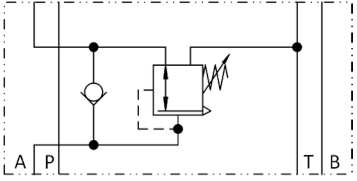
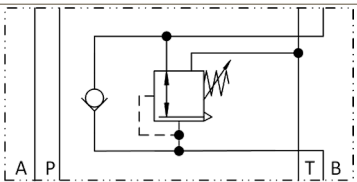
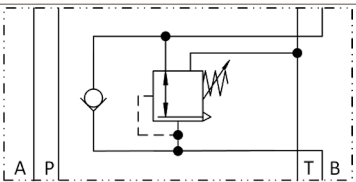
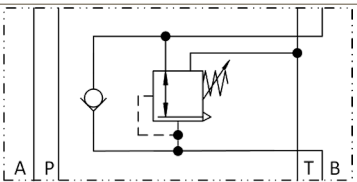
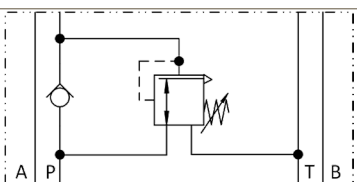
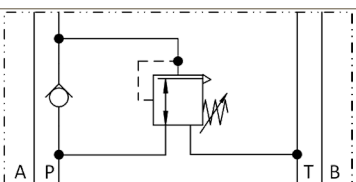
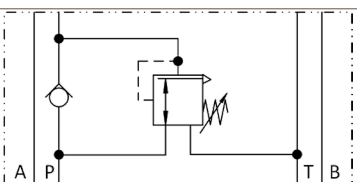
Type DM700

NG 6 ISO
up to 25 l/min, up to 700 bar

Type code

Example		DM	700	-	6	-	A	-	350	-	V	-	A		00	
Pressure reducing valves																Design 00 ... 99 For internal purposes
Size	700 bar															
Nominal size	6															
Design	A (in connection A) B (in connection B) P (in connection P)															Index Please leave blank For internal purposes
Max. pressure setting	130 (70 - 130 bar) 350 (120 - 350 bar) 600 (250 - 600 bar)															Design revision For internal purposes
Seal material	V FKM other seal materials on request															

Product information

Pressure setting	070 – 130 bar	120 – 350 bar	250 – 600 bar
Design	A		
Type code	DM700-6-A-130-V-A*00	DM700-6-A-350-V-A*00	DM700-6-A-600-V-A*00
Part No.	3682405	3682407	3682408
Symbol			
Design	B		
Type code	DM700-6-B-130-V-A*00	DM700-6-B-350-V-A*00	DM700-6-B-600-V-A*00
Part No.	3682410	3682413	3682435
Symbol			
Design	P		
Type code	DM700-6-P-130-V-A*00	DM700-6-P-350-V-A*00	DM700-6-P-600-V-A*00
Part No.	3741391	3741407	3741409
Symbol			

Scope of delivery

For each valve the following is included:
 4 pieces O-rings 9,25 x 1,78 mm, 90° ShA
 1 Adjusting knob mounted
 1 Cap in addition

Accessories

Tie bolts/ fixing screws and subplates are optionally available, see technical data sheet AP700/RP700/EP700!

Spare parts

Item description	Part No.
4 x O-Ring 9,25 x 1,78, FKM, 90 Shore A	4455692
Protective plug	4007853
Rotary grip	4005442
Protective cover 76 x 45 x 10	4007851
Check valve RV700-6-D8-V-A*00	3685929

Type DM700

NG 6 ISO
up to 25 l/min, up to 700 bar

Dimensional drawings

