

Pressure relief valves

Type DV2

NG 3 or 5
up to 25 l/min, up to **1000 bar**

Features

- Directly operated
- Pressure adjustable by screw thread and fixed by locking nut
- Pressure relief valves with threaded connection

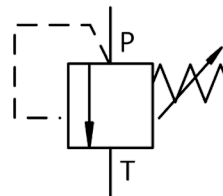


Applications

- For installation in In-line mounting systems
- Test benches

Design

- Cone poppet valve
- "Parts in body" valve



Technical data

Hydraulic fluid	mineral oil according to DIN 51524 (other fluids on request)
Fluid temperature range	- 20 to 80 °C
Ambient temperature range	- 30 to 50 °C
Viscosity range	5 bis 400 mm ² /s
Max. operating pressure connection P	see overview „Product information“
Max. operating pressure connection T	see overview „Product information“
Max. flow rate	see overview „Product information“
Filtration (recommendation)	according to NAS 1638, class 6 resp. ISO/DIN 4406 17/15/12
Weight	see overview „Product information“
Material	valve body: galvanized steel, chromated built-in parts: galvanized steel

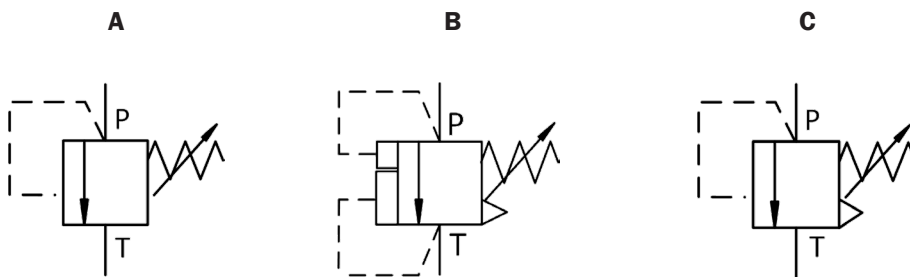
Type DV2

NG 3 or 5
up to 25 l/min, up to 1000 bar

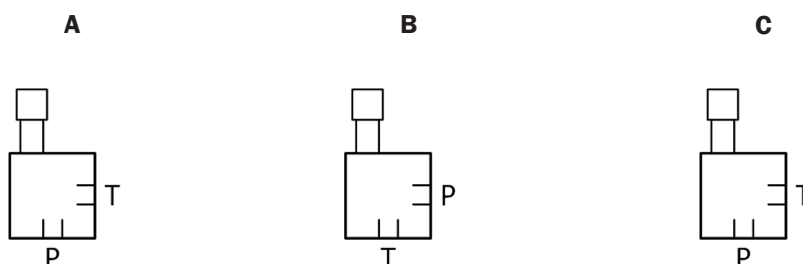
Type code

Example	DV2 - 3 - 400 - R - A - V - A - 00																
Pressure relief valves	<table border="1"> <tr> <td>Nominal size</td> <td>3</td> <td>5</td> </tr> </table>							Nominal size	3	5							
Nominal size	3	5															
Max. operating pressure connection P [bar]	see overview „Product information“																
Adjustment	R	with rotation knob															
	F	with protection cap															
	X	without rotation knob/ protection cap															
Symbol	A																
	B																
	C																
Seal material	V	FKM other seal materials on request															
		<table border="1"> <tr> <td>Design</td> <td>00 ... 99</td> </tr> <tr> <td></td> <td>For internal purposes</td> </tr> <tr> <td>Index</td> <td>Please leave blank</td> </tr> <tr> <td></td> <td>For internal purposes</td> </tr> <tr> <td>Design revision</td> <td>For internal purposes</td> </tr> </table>						Design	00 ... 99		For internal purposes	Index	Please leave blank		For internal purposes	Design revision	For internal purposes
Design	00 ... 99																
	For internal purposes																
Index	Please leave blank																
	For internal purposes																
Design revision	For internal purposes																

Symbols



Connections / flow direction



Product information

Type	NG	max. flow rate [l/min]	Symbol	max. operating pressure connection P [bar]	max. operating pressure connection T [bar]	Adjustment	Influence on pressure drop	Weight [kg]	Part No.
DV2-3-1000-R-A-V-A*00	3	3	A	1000	100	Rotation knob	1	0.6	3682522
DV2-3-1000-F-A-V-A*00	3	3	A	1000	100	Protection cap	1	0.6	3682520
DV2-3-1000-X-A-V-A*00	3	3	A	100	100	Without	1	0.4	3994349
DV2-5-1000-R-B-V-A*00	5	25	B	1000	50	Rotation knob	2	0.6	3682546 ¹⁾
DV2-5-1000-F-B-V-A*00	5	25	B	1000	50	Protection cap	2	0.6	3682545
DV2-5-1000-X-B-V-A*00	5	25	B	1000	50	Without	2	0.4	3994346
DV2-5-200-R-C-V-A*00	5	12	C	200	800	Rotation knob	3	0.7	3682676
DV2-5-200-F-C-V-A*00	5	12	C	200	800	Protection cap	3	0.7	3682654
DV2-5-200-X-C-V-A*00	5	12	C	200	800	Without	3	0.5	4676839
DV2-5-400-R-C-V-A*00	5	12	C	400	600	Rotation knob	3	0.7	3682679
DV2-5-400-F-C-V-A*00	5	12	C	400	600	Protection cap	3	0.7	3682678
DV2-5-400-X-C-V-A*00	5	12	C	400	600	Without	3	0.5	3994780
DV2-5-600-R-C-V-A*00	5	12	C	600	400	Rotation knob	3	0.7	3667268
DV2-5-600-F-C-V-A*00	5	12	C	600	400	Protection cap	3	0.7	3682680
DV2-5-600-X-C-V-A*00	5	12	C	600	400	Without	3	0.5	4676836

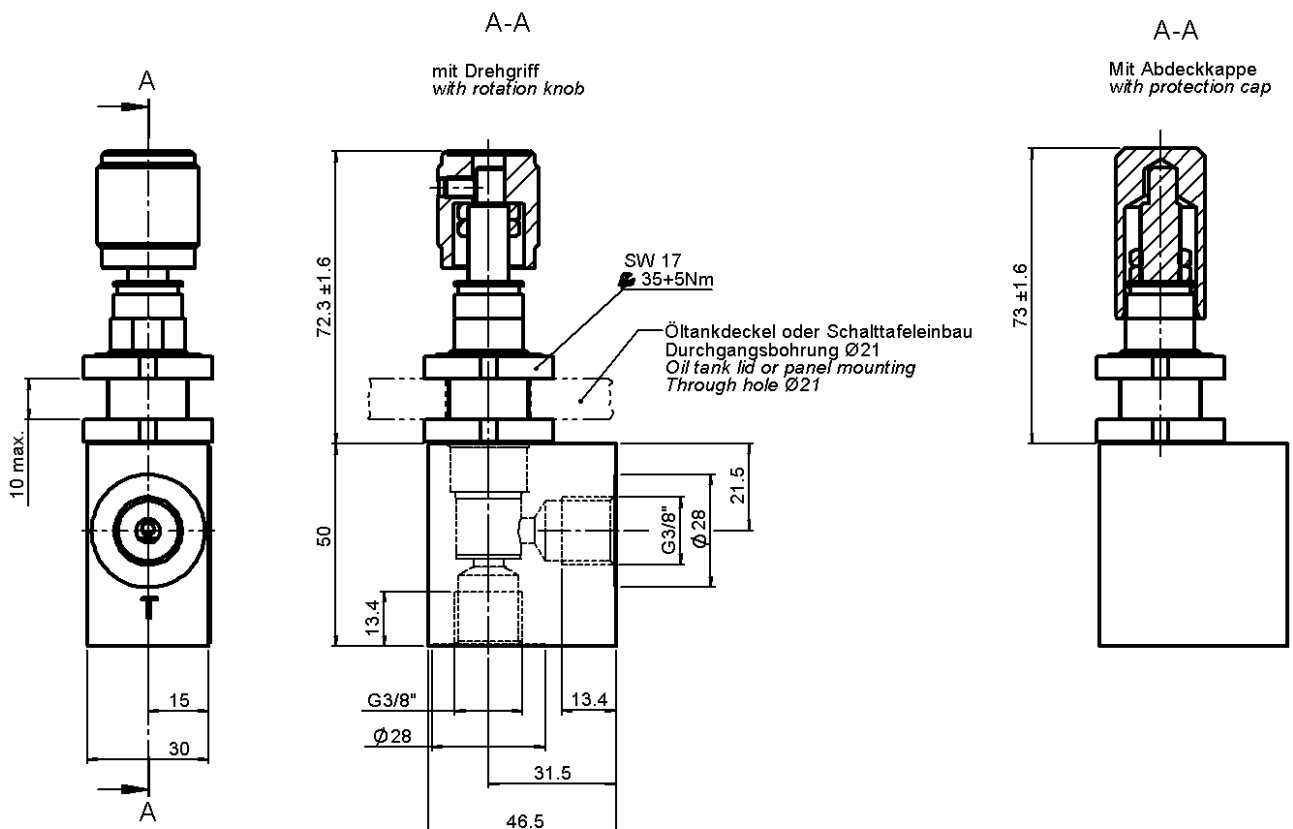
¹⁾ available also with NPT-connection thread

1: Pressure in P is increased by pressure drop in T

2: Pressure in P is reduced by 2,6 times pressure drop in T

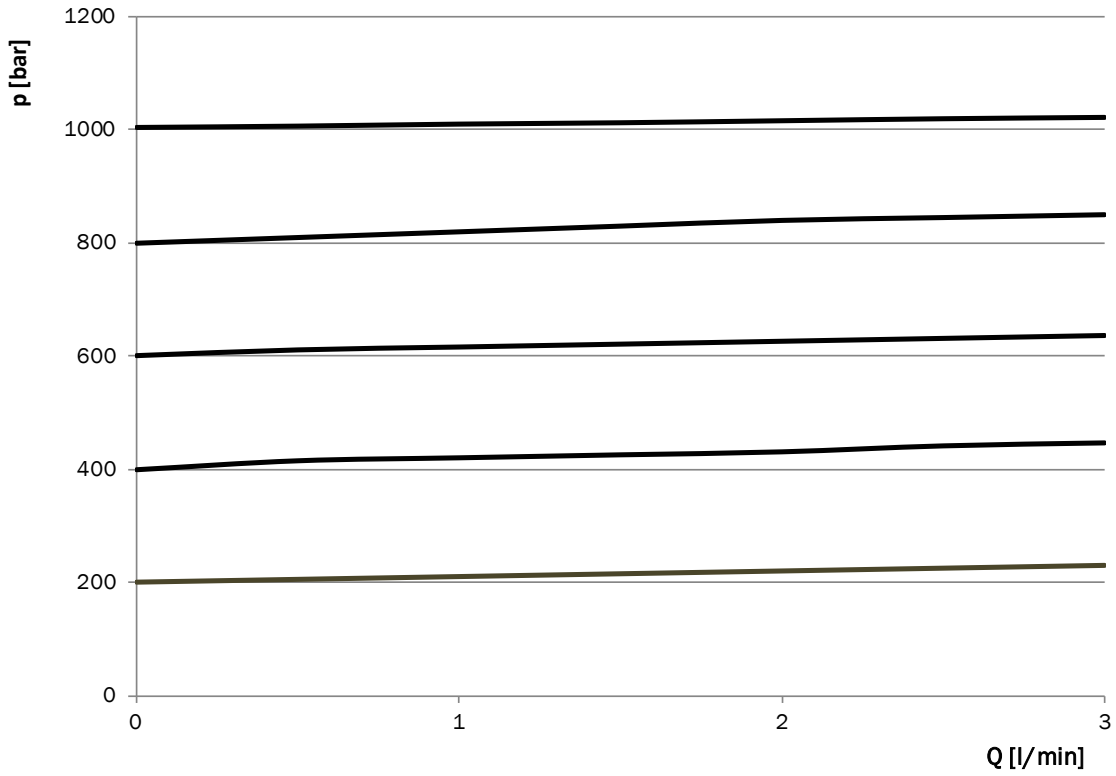
3: Pressure drop in T does not affect pressure in P

Dimensional drawings

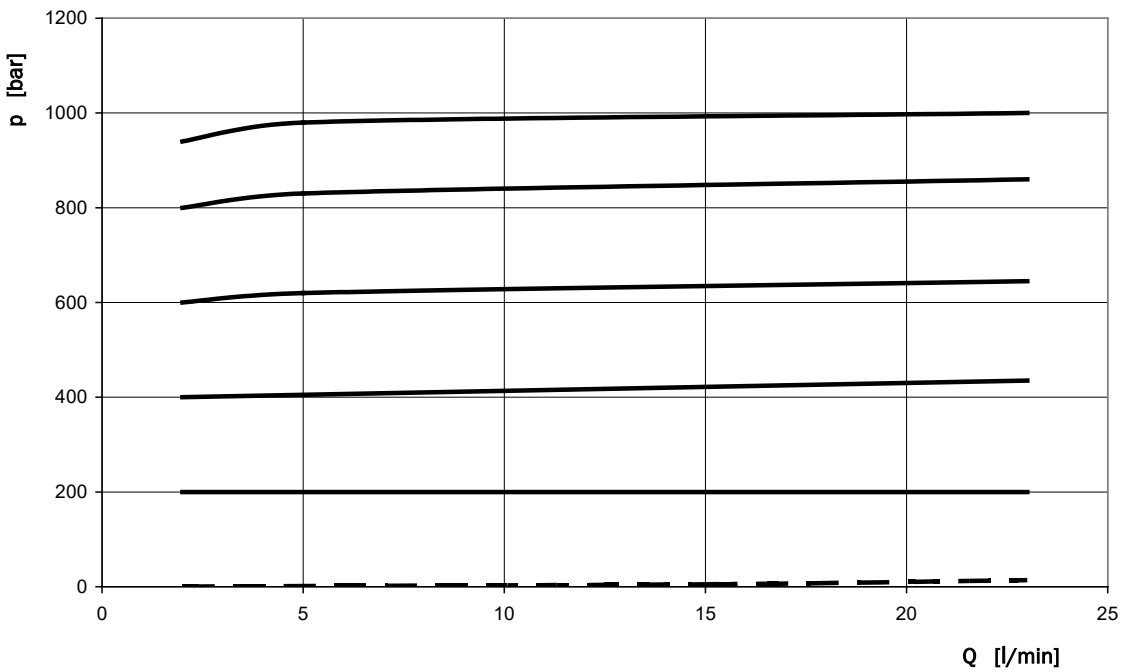


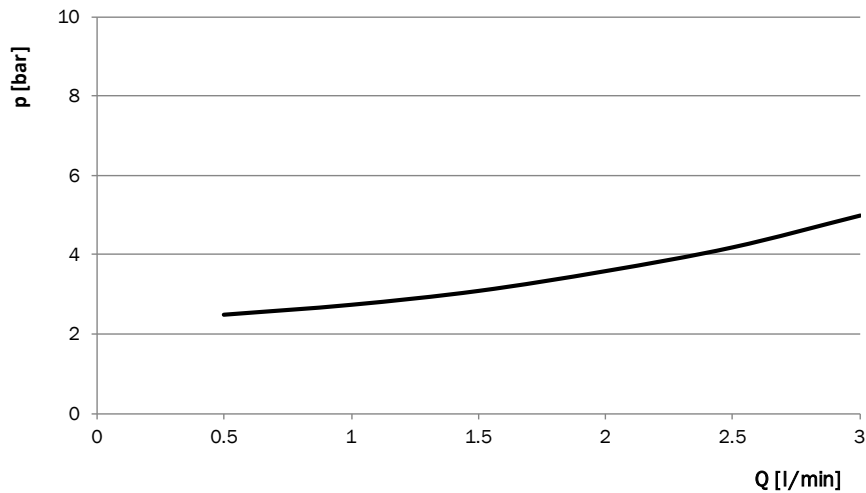
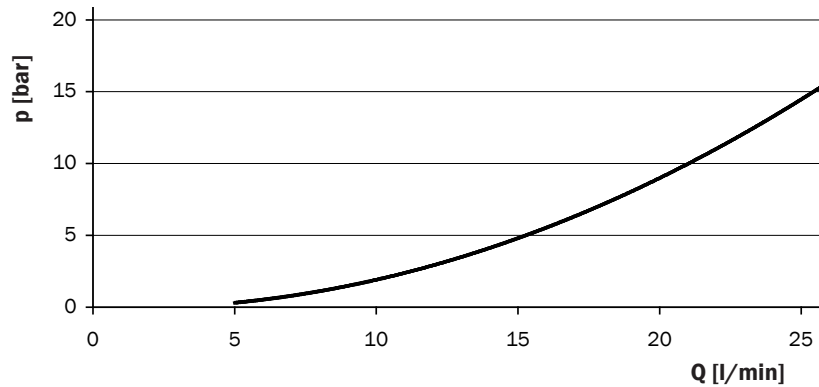
Characteristics

Pressure in function of flow rate (for symbol A)



Pressure in function of flow rate (for symbol B)



Pressure drop with released spring in function of flow rate (for symbol A)**Pressure drop with released spring in function of flow rate (for symbol B)****Bieri Hydraulik AG**

Könizstrasse 274
CH-3097 Liebefeld
Tel. +41 31 970 09 09 | Fax +41 31 970 09 10
info@bierihydraulics.com | www.bierihydraulics.com

The information in this brochure relates to the operating conditions and applications described.

For applications and operating conditions not described, please contact the relevant technical department.

Subject to technical modifications.