

Shut-off valves

Type AV700

NG 6 ISO

up to 25 l/min, up to **700 bar**

Features

- Bidirectional (flow in both directions, independent of pressure port)
- Poppet tight



Applications

Shut-off valves are used to shut off and open hydraulic connections at any pressure and pressure difference up to 700 bar. Furthermore, it can also be used as a drain valve against the tank.

Design

- As cartridge
- As modular valve

Technical data

Hydraulic fluid	mineral oil according to DIN 51524 (other fluids on request)
Fluid temperature range	- 20 to 80 °C
Ambient temperature range	- 30 to 50 °C
Viscosity range	5 to 400 mm ² /s
Porting	NG 6 according to DIN 24340 / ISO 4401 / CETOP RP 121 H
Max. operating pressure connection P, A, B	700 bar
Max. operating pressure connection T	350 bar
Max. flow rate	25 l/min
Filtration (recommendation)	according to NAS 1638, class 6 resp. ISO/DIN 4406 17/15/12
Pressure drop	at 25 l/min (fully open) and 32 mm ² /s: 15 bar
Weight	see overview "Product information"
Materials	cartridge body: high strength steel (burnished) valve body: corrosion-resistant steel handle: grey cast iron

Type AV700

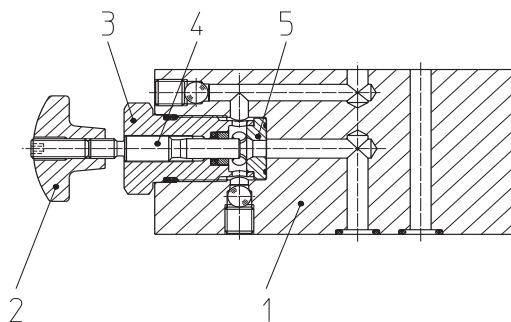
NG 6 ISO
up to 25 l/min, up to 700 bar

Type code







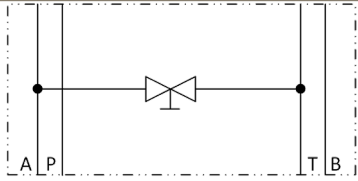
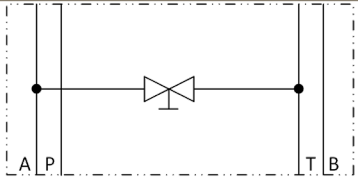
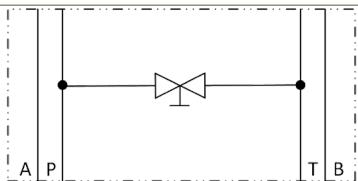
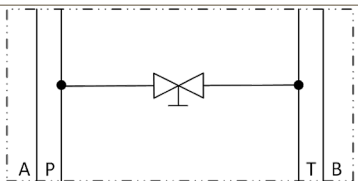
Example	AV	700	-	6	-	E	-	700	-	S	-	V	-	A		00
Shut-off valves																
Size	700 bar															
Nominal size	6															
Design																
E	cartridge															
PP	shut-off valve in P															
AA	shut-off valve in A															
AT	shut-off valve A to T															
PT	shut-off valve P to T															
Max. operating pressure	700 bar															
Design																
S	star knob															
K	lever handle															
Seal material	V FKM other seal materials on request															
Design 00 ... 99 For internal purposes																
Index Please leave blank For internal purposes																
Design revision For internal purposes																

Design

- 1) valve body
- 2) adjusting knob
- 3) cartridge body
- 4) spindle
- 5) seat



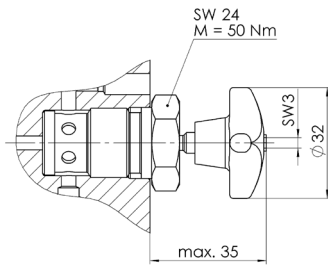
Product information

Design cartridge	S (star knob)	K (lever handle)
Design	E	
Type code	AV700-6-E-700-S-V-A*00	AV700-6-E-700-K-V-A*00
Part No.	3678553	on request
Symbol		
Weight	0,12 kg	0,12 kg
Design	PP	
Type code	AV700-6-PP-700-S-V-A*00	AV700-6-PP-700-K-V-A*00
Part No.	on request	on request
Symbol		
Weight	1,9 kg	1,9 kg
Design	AA	
Type code	AV700-6-AA-700-S-V-A*00	AV700-6-AA-700-K-V-A*00
Part No.	on request	on request
Symbol		
Weight	1,9 kg	1,9 kg
Design	AT	
Type code	AV700-6-AT-700-S-V-A*0	AV700-6-AT-700-K-V-A*00
Part No.	on request	on request
Symbol		
Weight	1,51 kg	1,51 kg
Design	PT	
Type code	AV700-6-PT-700-S-V-A*00	AV700-6-PT-700-K-V-A*00
Part No.	on request	on request
Symbol		
Weight	1,51 kg	1,51 kg

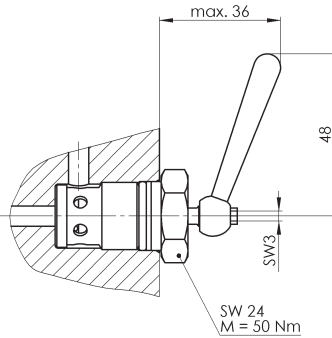
Dimensional drawings

E

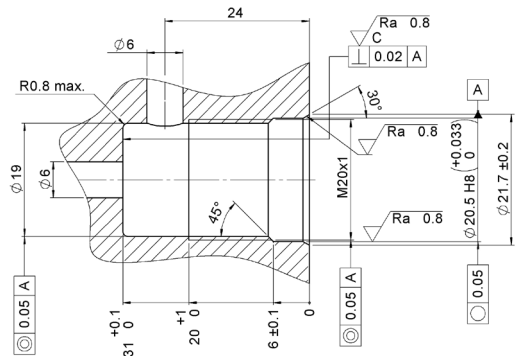
with star knob



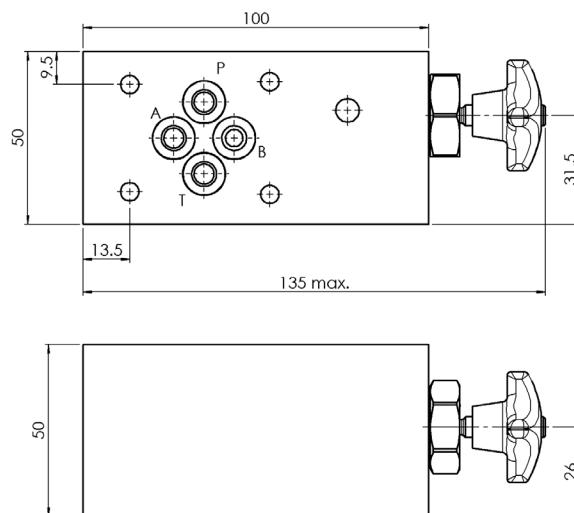
with lever handle



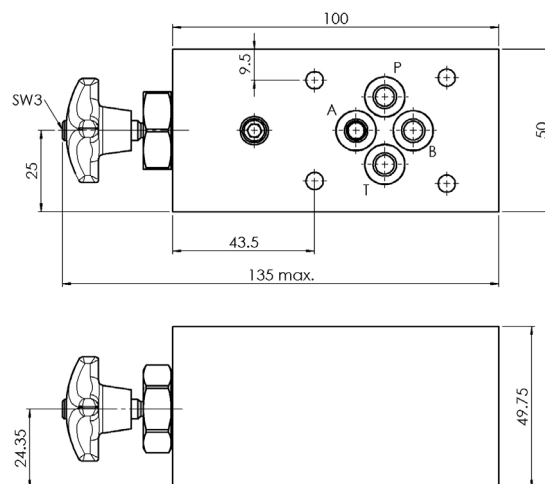
E cavity



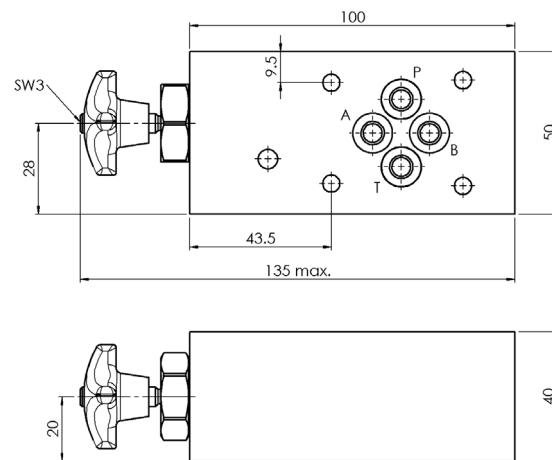
PP



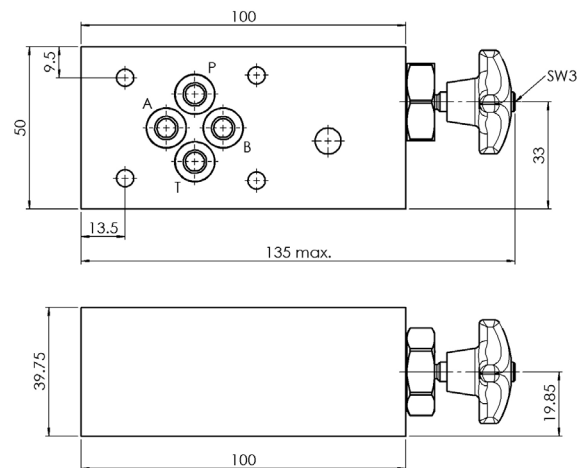
AA



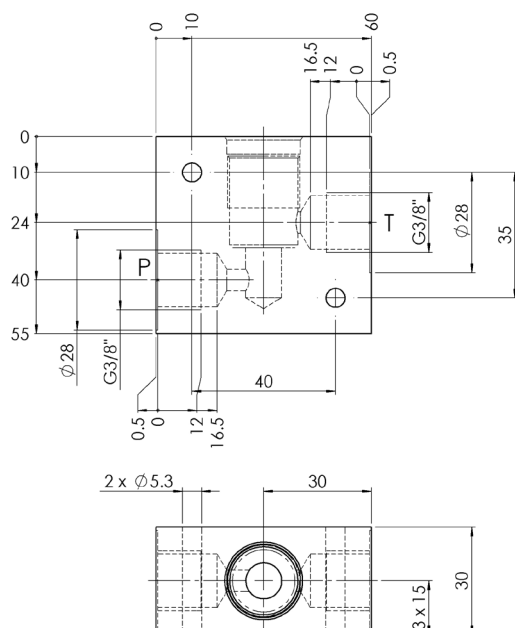
AT



PT

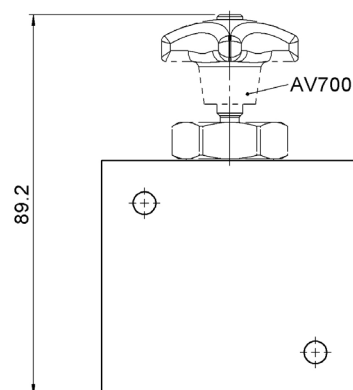


Valve block for in-line mounting



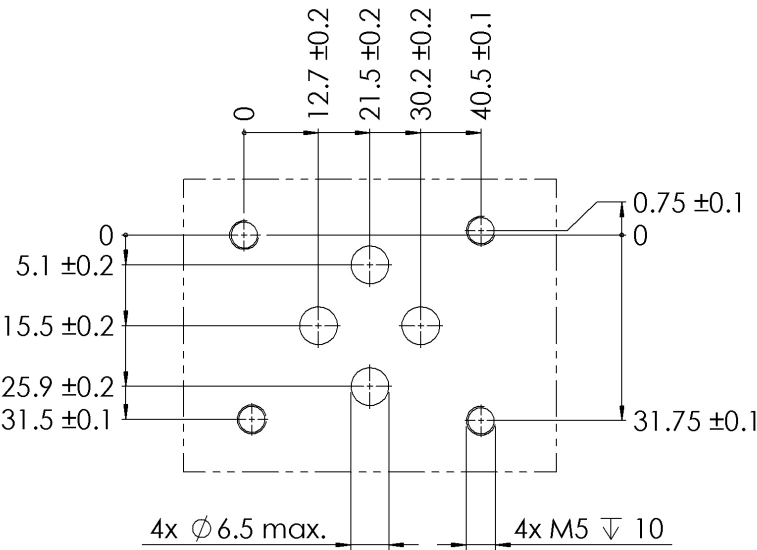
Valve block for in-line mounting with shut-off cartridge

(Cartridge not included in scope of supply)



Type AV700
NG 6 ISO up to 25 l/min, up to 700 bar

Drilling pattern



Scope of delivery

For each valve the following is included:
4 pieces O-rings 9,25 x 1,78 mm, 90°ShA

Accessories

Tie bolts/ fixing screws and subplates are optionally available,
see technical data sheet AP700/RP700/EP700

Spare parts

Item description	Part No.
4 x O-ring 9,25 x 1,78, FKM, 90 Shore A	4484542
1 x O-ring 13 x 1,5, FKM, 80 Shore A	
1 x O-ring 17,17 x 1,78, FKM, 90 Shore A	
1 x support ring	
Protective cover 76 x 45 x 10	4007851

Valve block for in-line mounting

Type	Max. operating pressure	Part No.
VKR-6	700 bar	3678841

Bieri Hydraulik AG
Könizstrasse 274
CH-3097 Liebefeld
Tel. +41 31 970 09 09 | Fax +41 31 970 09 10
info@bieri hydraulics.com | www.bieri hydraulics.com

The information in this brochure relates to the operating conditions and applications described.
For applications and operating conditions not described, please contact the relevant technical department.
Subject to technical modifications.