

Load holding - lowering valves

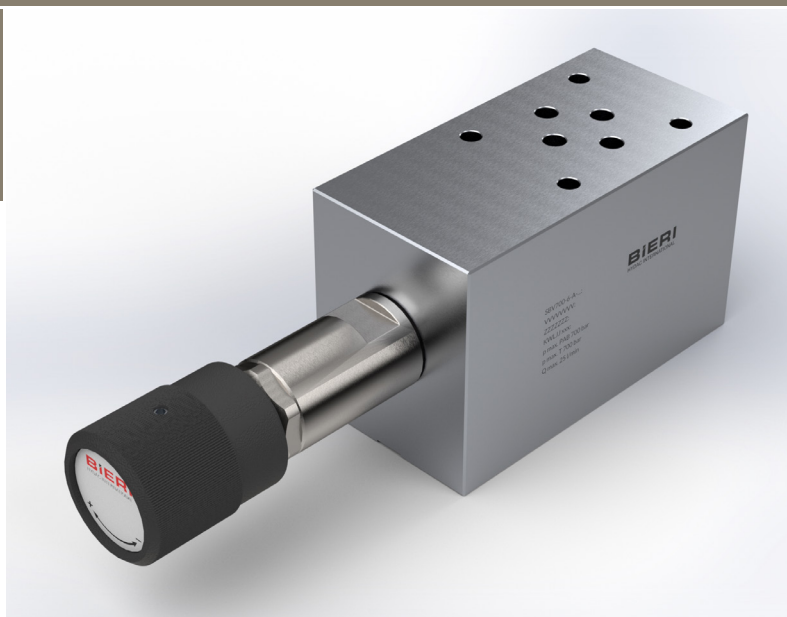
Type SBV700

NG 6 ISO

up to 25 l/min, up to **700 bar**

Features

- Direct operated
- Poppet tight
- Pilot pressure adjustable up to max. 350 bar
- Low tendency for vibration due to function independent from load



Applications

For load holding and controlled lowering of loads with double acting cylinders. Protection against uncontrolled and improper movement in direction of load. Consistent travelling speed of the consumer regardless of the load.

Design

- Poppet valves in modular plate design

Technical data

Hydraulic fluid	Mineral oil according to DIN 51524 (other fluids on request)	
Fluid temperature range	-20 to 80 °C	
Ambient temperature range	-30 to 50 °C	
Viscosity range	5 to 400 mm ² /s	
Porting	NG 6 according to DIN 24340 / ISO 4401 / CETOP RP 121 H	
Max. operating pressure connection P, A, B	700 bar	
Max. operating pressure connection T	350 bar	
Max. flow rate	25 l/min	
Pilot pressure adjustable	50 bar up to 350 bar	
Filtration (recommendation)	According to NAS 1638, class 6 resp. ISO/DIN 4406 17/15/12	
Weight	2,3 kg	
Material	Housing:	stainless steel
	Cartridge:	stainless steel
	Adjusting knob:	plastic

Type SBV700
NG 6 ISO up to 25 l/min, up to 700 bar

Type code

Example

SBV

700

-

6

-

A

-

350

-

V

-

A

00

Load holding - lowering valves

Type700 bar

Nominal Size6

Design

A

B

L

F

CETOP, connection A closed, operated by connection B

CETOP, connection B closed, operated by connection A

for in-line mounting

cylinder mounting

Pilot pressure

350

max. adjustable pilot pressure (50 - 350 bar)

Seal material

V

FKM

other seal materials on request

Design

00 ... 99

For internal purposes

Index

Please leave blank

For internal purposes

Design revision

For internal purposes

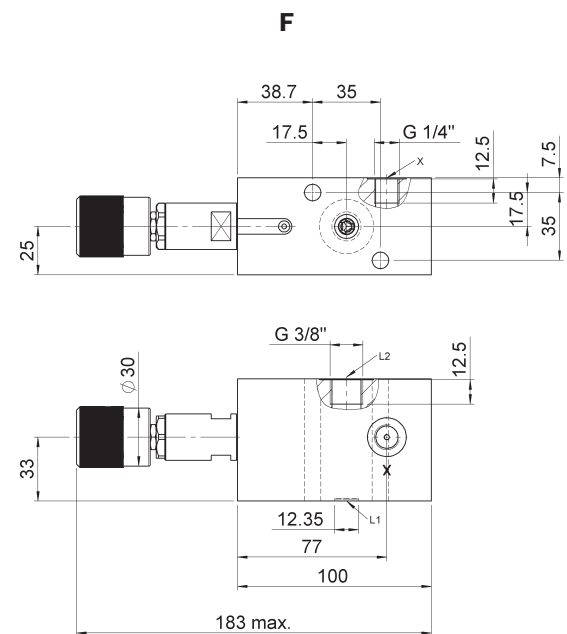
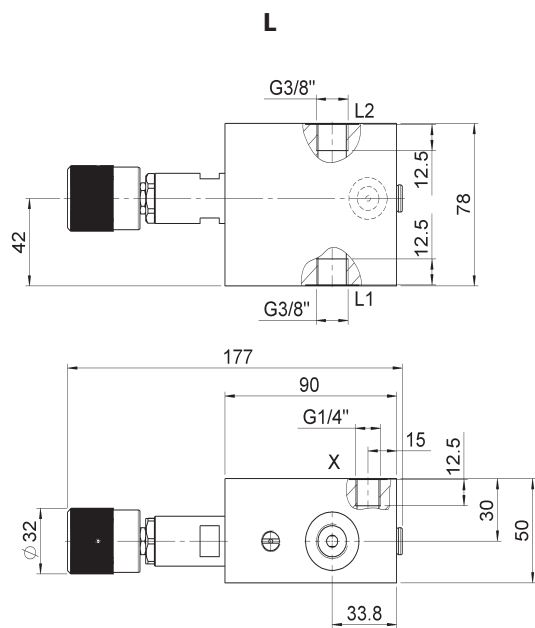
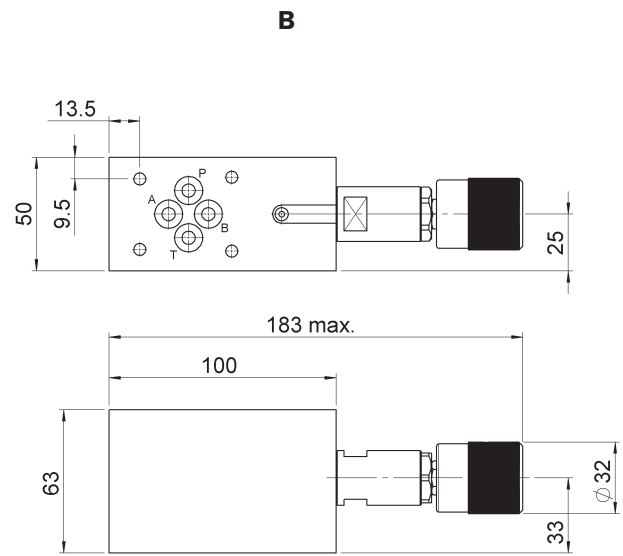
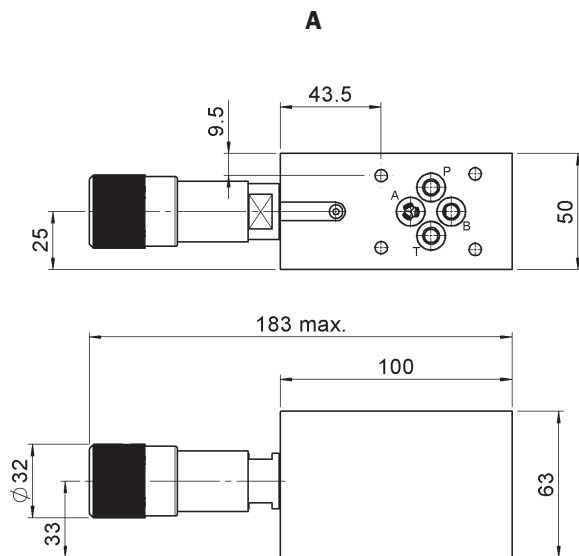
Product information

Design	A	B	L	F
Type code	SBV700-6-A-350-V-A*00	SBV700-6-B-350-V-A*00	SBV700-6-L-350-V-A*00	SBV700-6-F-350-V-A*00
Part No.	3686771	3687582	4052347	4052346
Symbol				

2/4

BIERI
HYDRAUS INTERNATIONAL

Dimensional drawings



Technical drawing of the front view of a rectangular plate. The overall dimensions are 60 min. (width) and 50 min. (height). The plate features a central square area with a dashed border. Within this area, there are four circular features labeled A, B, P, and T. The plate is secured by four screws, labeled 4 x $\phi 6.5$ max. and 4 x M5 $\nabla 10$. The drawing includes various dimensions and tolerances:

- Overall width: 60 min.
- Overall height: 50 min.
- Top edge dimensions (from left to right): 9.5, 0, 12.7 ± 0.2 , 2 x 21.5 ± 0.2 , 30.2 ± 0.2 , 2 x 40.5 ± 0.1 .
- Left edge dimensions (from top to bottom): 9.5, 0, 5.1 ± 0.2 , 2 x 15.5 ± 0.2 , 25.9 ± 0.2 , 31 ± 0.1 .
- Right edge dimensions (from top to bottom): 0.75 ± 0.1 , 0, 31.75 ± 0.1 .
- Bottom edge dimensions (from left to right): 4 x $\phi 6.5$ max., 4 x M5 $\nabla 10$.
- Surface texture: Rz 4 and 0.02.

For each valve the following is included:
4 pcs. O-rings 9,25 x 1,78 mm, 90° ShA
1 adjusting knob mounted
1 cap in addition

Other mounting screws, tie bolts and subplates see technical data sheet AP700/RP700/EP700.