

# Load holding - lowering valves

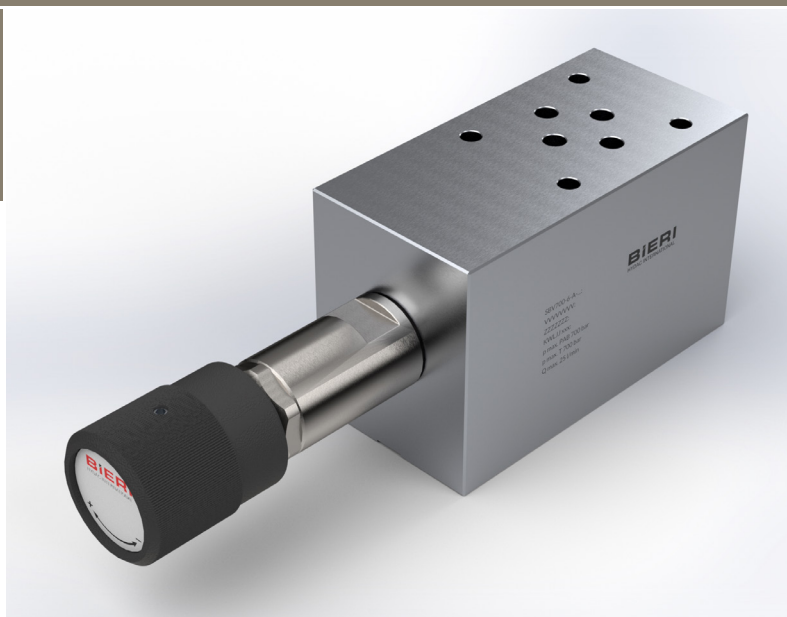
## Type SBV700

NG 6 ISO

up to 25 l/min, up to **700 bar**

### Features

- Direct operated
- Poppet tight
- Pilot pressure adjustable up to max. 350 bar
- Low tendency for vibration due to function independent from load



### Applications

For load holding and controlled lowering of loads with double acting cylinders. Protection against uncontrolled and improper movement in direction of load. Consistent travelling speed of the consumer regardless of the load.

### Design

- Poppet valves in modular plate design

### Technical data

Hydraulic fluid	Mineral oil according to DIN 51524 (other fluids on request)	
Fluid temperature range	-20 to 80 °C	
Ambient temperature range	-30 to 50 °C	
Viscosity range	5 to 400 mm <sup>2</sup> /s	
Porting	NG 6 according to DIN 24340 / ISO 4401 / CETOP RP 121 H	
Max. operating pressure connection P, A, B	700 bar	
Max. operating pressure connection T	350 bar	
Max. flow rate	25 l/min	
Pilot pressure adjustable	50 bar up to 350 bar	
Filtration (recommendation)	According to NAS 1638, class 6 resp. ISO/DIN 4406 17/15/12	
Weight	2,3 kg	
Material	Housing:	stainless steel
	Cartridge:	stainless steel
	Adjusting knob:	plastic

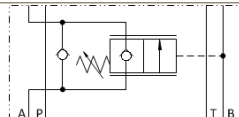
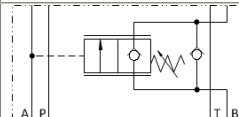
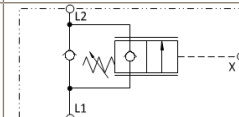
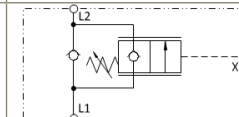
## Type SBV700

NG 6 ISO  
up to 25 l/min, up to 700 bar

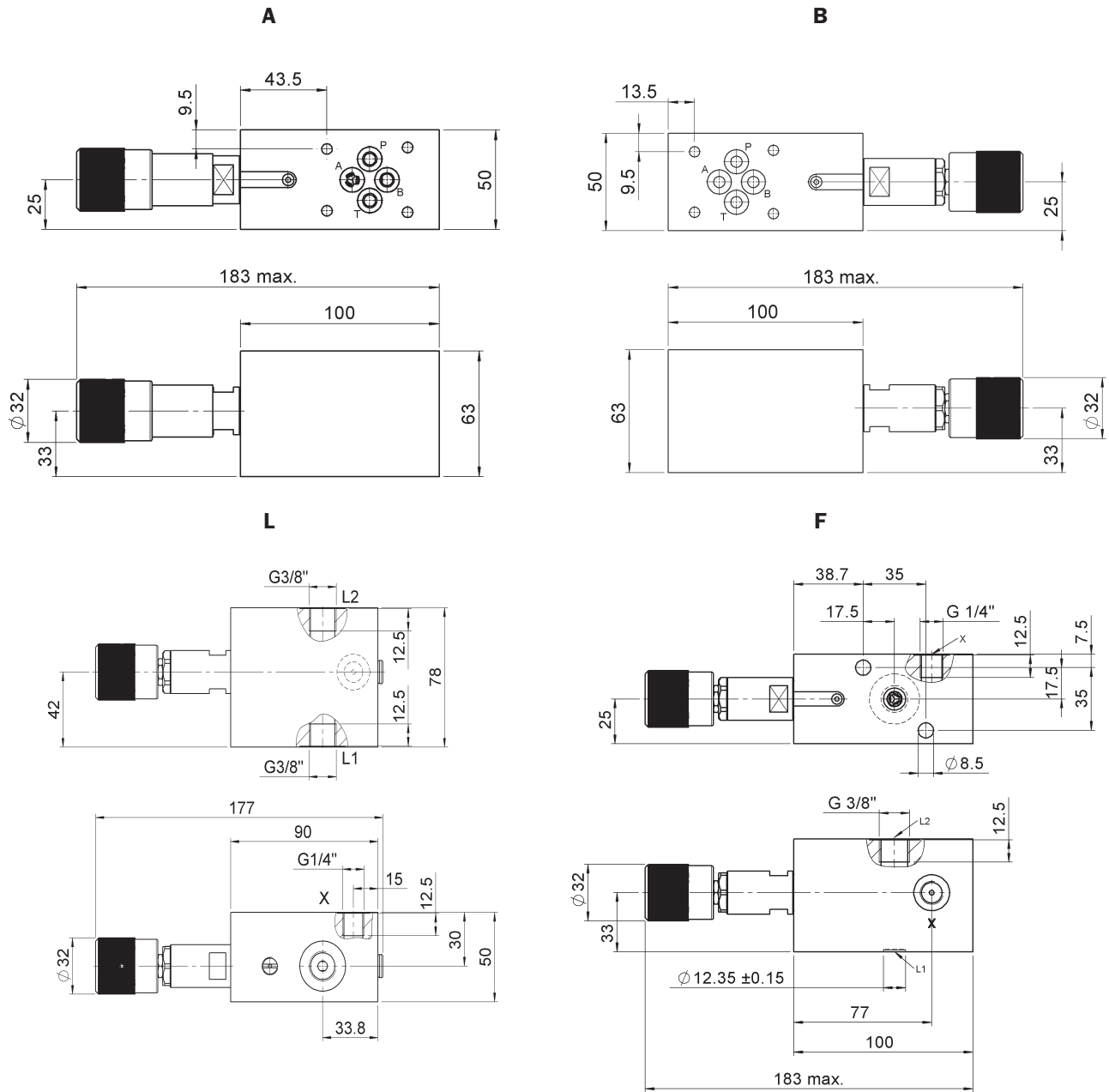
## Type code

<b>Example</b>	SBV	700	-	6	-	A	-	350	-	V	-	A		00
<b>Load holding - lowering valves</b>														
<b>Type</b>	700 bar													
<b>Nominal Size</b>	6													
<b>Design</b>														
<b>A</b>	CETOP, connection A closed, operated by connection B													
<b>B</b>	CETOP, connection B closed, operated by connection A													
<b>L</b>	for in-line mounting													
<b>F</b>	cylinder mounting													
<b>Pilot pressure</b>														
<b>350</b>	max. adjustable pilot pressure (50 - 350 bar)													
<b>Seal material</b>	V FKM other seal materials on request													
<b>Design</b>	00 ... 99 For internal purposes													
<b>Index</b>	Please leave blank For internal purposes													
<b>Design revision</b>	For internal purposes													

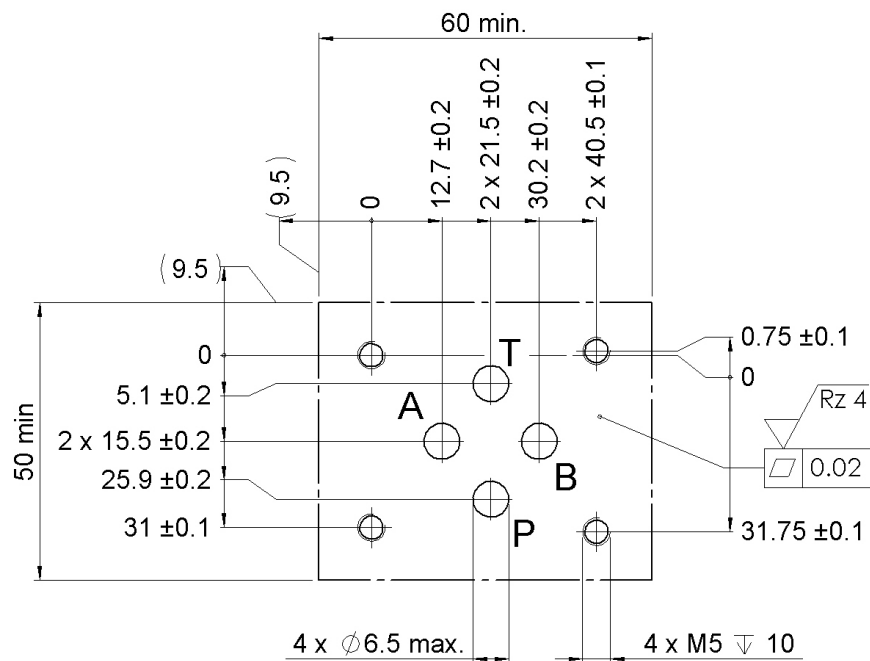
## Product information

Design	A	B	L	F
Type code	SBV700-6-A-350-V-A*00	SBV700-6-B-350-V-A*00	SBV700-6-L-350-V-A*00	SBV700-6-F-350-V-A*00
Part No.	3686771	3687582	4052347	4052346
Symbol				

## Dimensional drawings



## Drilling pattern



## Scope of delivery

For each valve the following is included:  
 4 pcs. O-rings 9,25 x 1,78 mm, 90° ShA  
 1 adjusting knob mounted  
 1 cap in addition

Other mounting screws, tie bolts and subplates see technical data sheet AP700/RP700/EP700.

## Bieri Hydraulik AG

Könizstrasse 274  
 CH-3097 Liebefeld  
 Tel. +41 31 970 09 09 | Fax +41 31 970 09 10  
 info@bieri hydraulics.com | www.bieri hydraulics.com

The information in this brochure relates to the operating conditions and applications described.

For applications and operating conditions not described, please contact the relevant technical department.

Subject to technical modifications.