

Single subplates

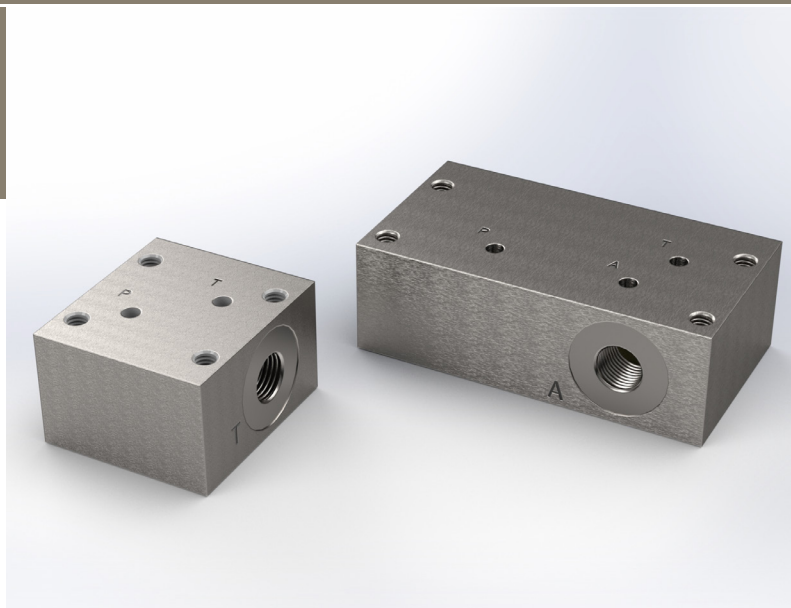
Type EAP-4B

NG 4 Bieri

up to 12 l/min, up to **700 bar**

Features

- Good corrosion resistance



Applications

- Single mounting of valve series W VH-4B and W VH-4B-Bi in pipe systems

Design

- Available with 1/4" and 3/8" connection threads

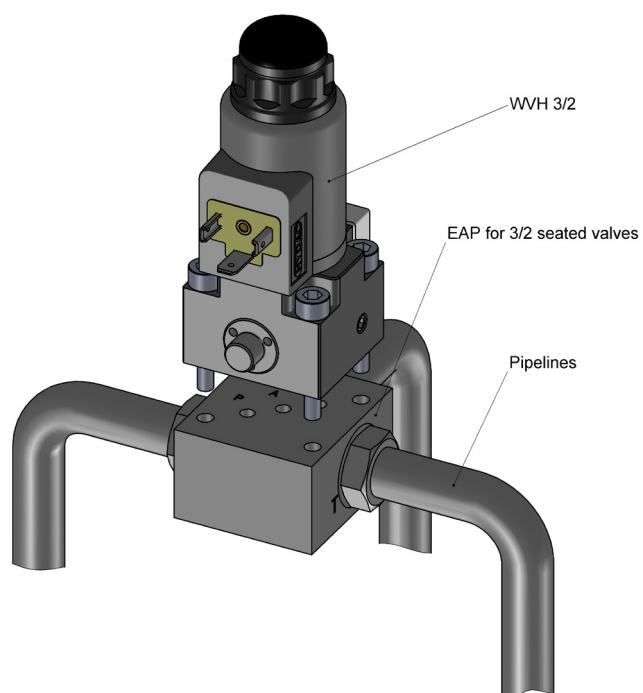
Technical data

Hydraulic fluid	mineral oil according to DIN 51524 (other fluids on request)
Fluid temperature range	-20 to 80 °C
Ambient temperature range	-30 to 50 °C
Viscosity range	5 to 400 mm ² /s
Porting	NG 4 according to Bieri standard
Max. operating pressure	700 bar
Max. flow rate	12 l/min
Filtration	according to NAS 1638 class 6 resp. ISO/DIN 4406 17/15/12
Weight	see overview "Product informations"
Material	corrosion-resistant steel

Type EAP-4B

NG 4 Bieri
up to 12 l/min, up to 700 bar





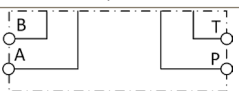

Example single mounting



Type code

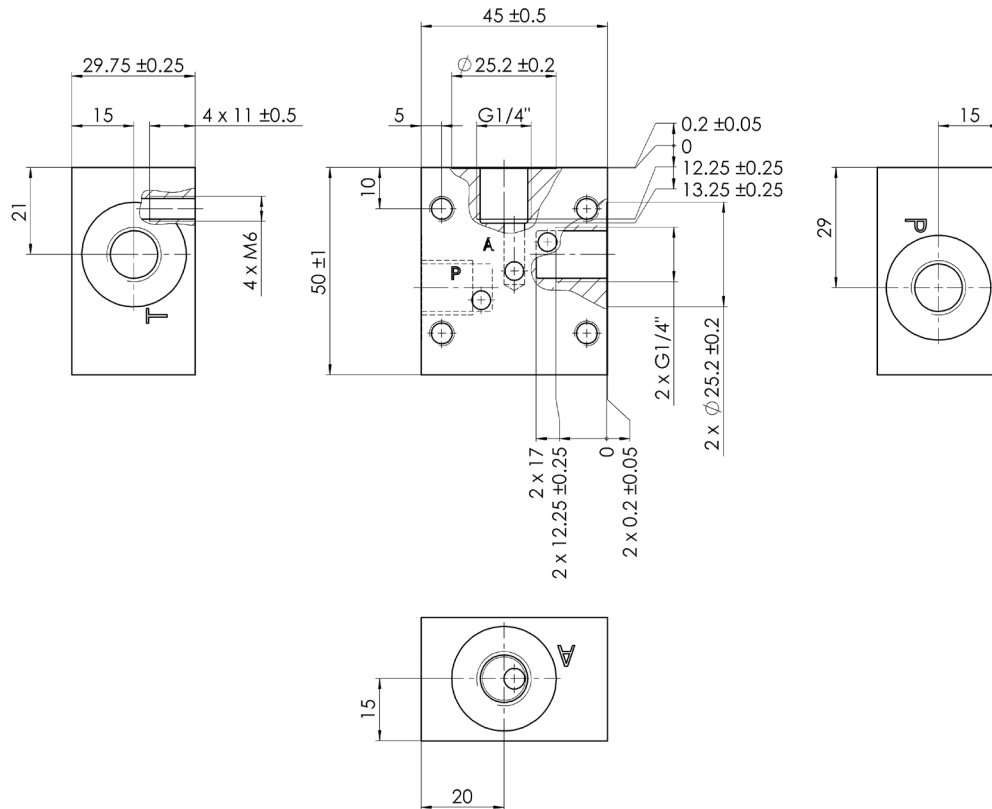
Example	EAP - 4B - 2 / 2 - G3/8 - A - 00
Single Subplates	
Nominal size 4 ...	
Connection Bieri ... B	
Number of ports 2, 3 or 4	
Number of positions 2 or 3	
Threaded connection G1/4 G 1/4" port G3/8 G 3/8" port other threaded connections on request	
	Design 00 ... 99 For internal purposes
	Index Please leave blank For internal purposes
	Design revision For internal purposes

Product informations

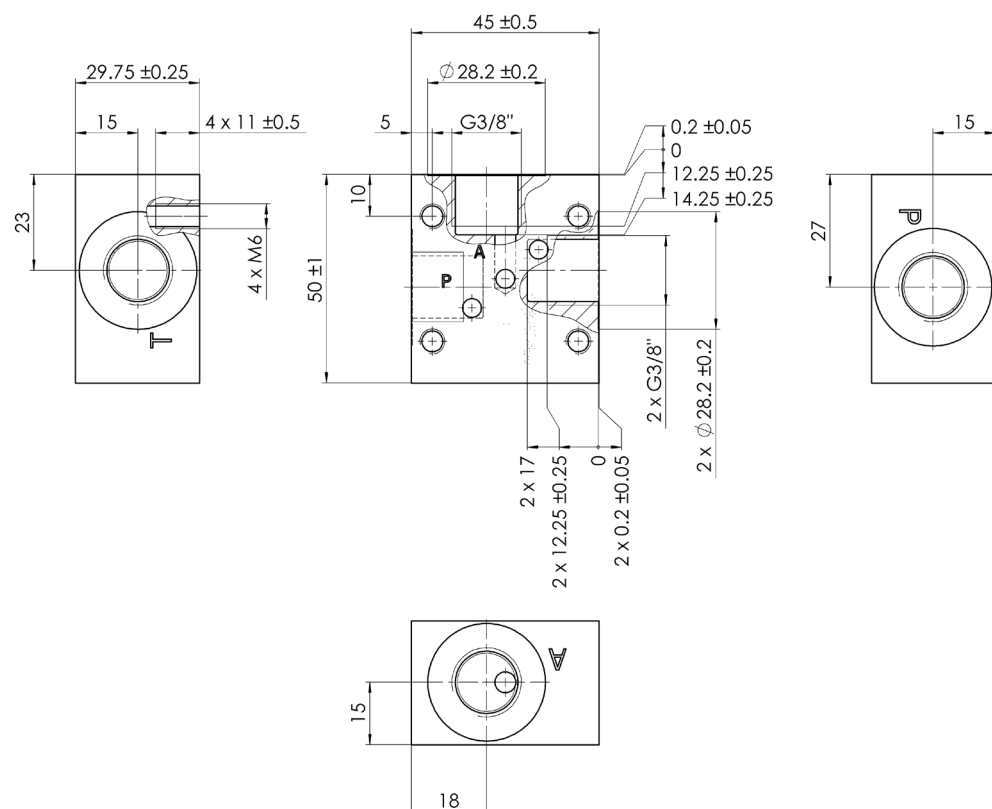
Valve type	2/2		3/2	
Part No.	3763413	on request	3832498	on request
Threaded connection	1/4"	3/8"	1/4"	3/8"
Symbol				
Weight	0,45 kg	0,45 kg	0,45 kg	0,45 kg
Valve type	4/2		3/3	
Part No.	on request		on request	
Threaded connection	3/8"		3/8"	
Symbol				
Weight	0,45 kg		0,95 kg	

3/2 single subplates

G1/4"

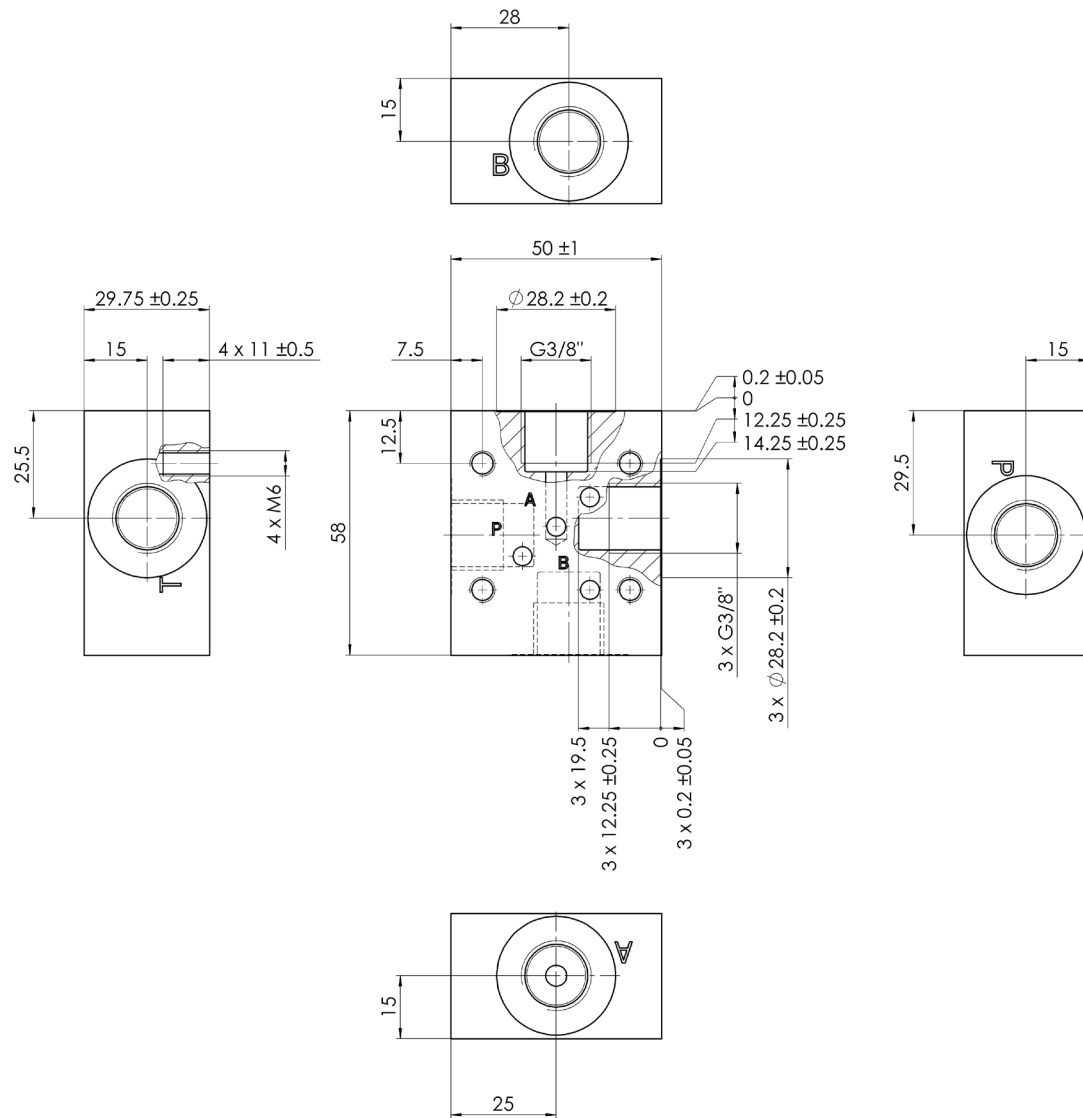


G3/8"



4/2 single subplates

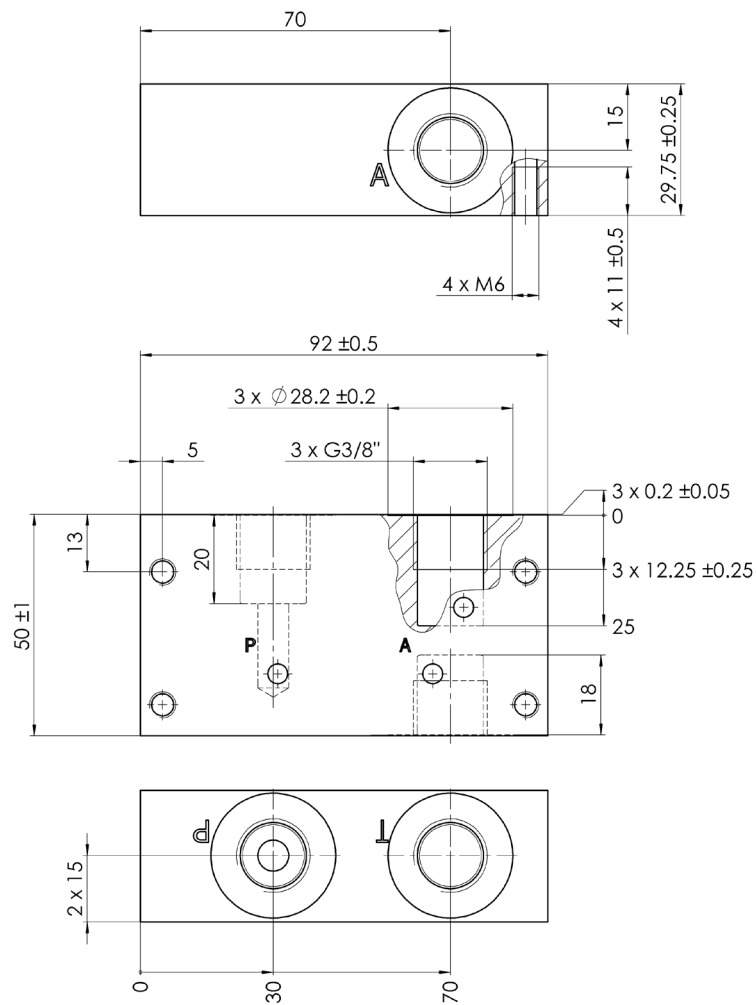
G3/8"



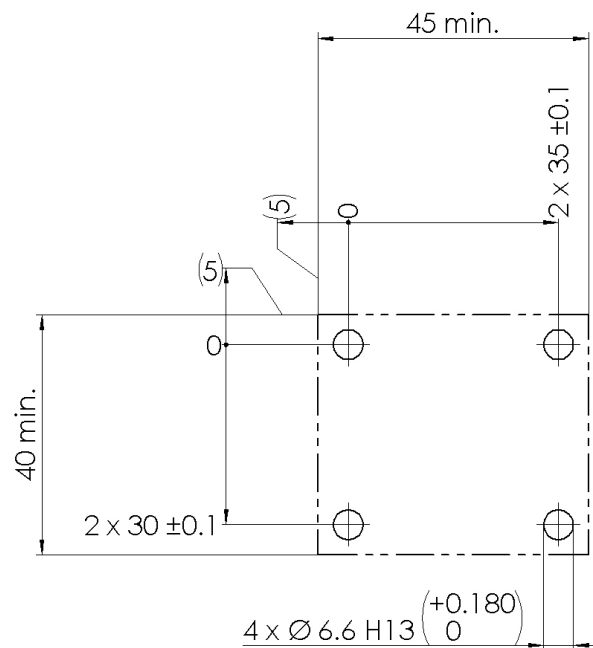
When using the single subplate, the plug in connection B of the valve must be removed and pipe port B on the valve closed.

3/3 single subplates

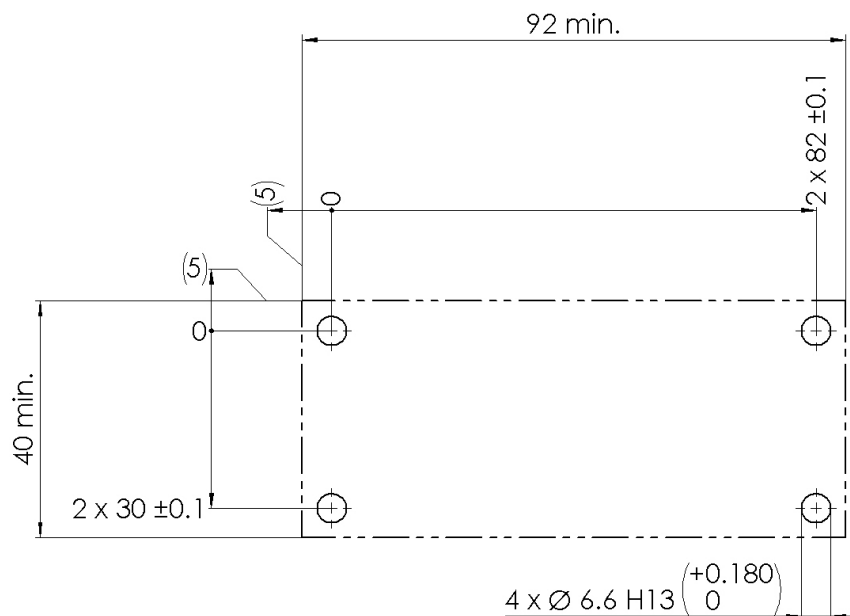
G3/8"



Drilling pattern 2/2, 3/2 and 4/2 single subplates



Drilling pattern 3/3



Bieri Hydraulik AG

Könizstrasse 274
CH-3097 Liebefeld
Tel. +41 31 970 09 09 | Fax +41 31 970 09 10
info@bieri hydraulics.com | www.bieri hydraulics.com

The information in this brochure relates to the operating conditions and applications described.

For applications and operating conditions not described, please contact the relevant technical department.

Subject to technical modifications.